

LAW ENFORCEMENT AMMUNITION

2024



FEDERAL  PREMIUM®
LAW ENFORCEMENT

SPEER®
LE

PROTOCOL PROVEN

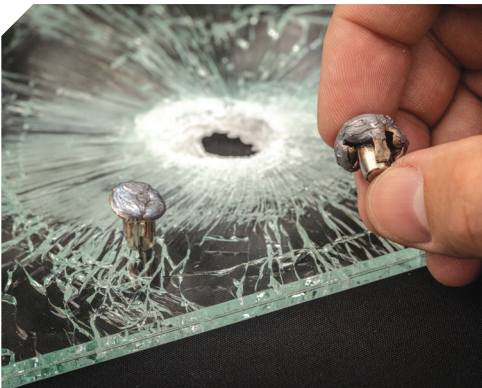
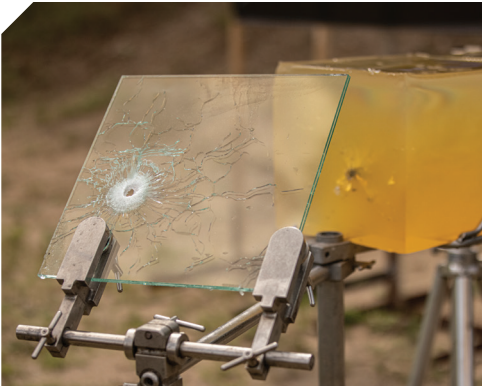
The FBI provided the **science** and the **protocol**. Federal and Speer follow it from product concept to completion, engineering to production, and presentation to performance. We take FBI protocol testing **seriously** and follow it **stringently** because we are **committed** to law enforcement and **devoted** to providing them the best ammunition to keep their communities safe.

We **calibrate** gelatin, **measure** expansion and **follow the protocol** to the letter. We involve officers and agencies in testing during our Wound Ballistic Workshops, giving them a hands-on role in testing and recording performance.

The results speak for themselves: **Technologically advanced** products designed specifically for **law enforcement** that meet and **exceed** FBI protocol requirements.

The REPUTATION wasn't GIVEN to us. It was EARNED.

Feel **confident** in any situation and **every day** you are on the street.



Please contact your Vista Outdoor LE Distributor or find your Regional Vista Outdoor LE Specialist at le.vistaoutdoor.com.

FEDERAL PREMIUM® LAW ENFORCEMENT

DUTY HANDGUN

HST®	4
Hydra-Shok Deep, Hydra-Shok® & Federal®	5
Ballistics	6

TRAINING HANDGUN

American Eagle®	7
BallistiClean® & Syntech®	8-9
Ballistics	9

DUTY RIFLE

Tactical® Bonded Tip	10
Tactical Bonded	11
Tactical TRU® & Tactical Tip MatchKing	11
Gold Medal®	12-13
Ballistics	12-13

TRAINING RIFLE

BallistiClean	14
American Eagle	15
Ballistics	14-15

SHOTSHELL

Tactical & BallisticClean Buckshot	16-17
Top Gun Target Loads	17
Tactical and BallistiClean Slugs	18-19

SPEER® LAW ENFORCEMENT

DUTY HANDGUN

G2® and Gold Dot®	20-21
Gold Dot Short Barrel	22
Ballistics	22

DUTY RIFLE

Gold Dot	23
Ballistics	23

TRAINING HANDGUN

Lawman®	24
Ballistics	25

BLAZER® (POWERED BY CCI®)

Handgun	26-27
Ballistics	27

TABLE OF CONTENTS

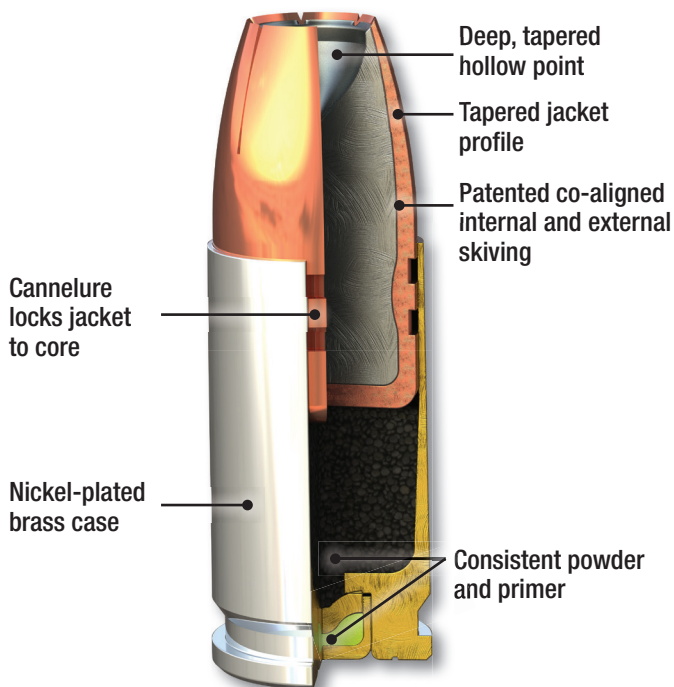


FEDERAL PREMIUM® LE

TACTICAL® HST®

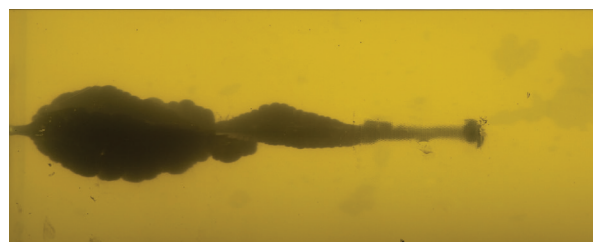
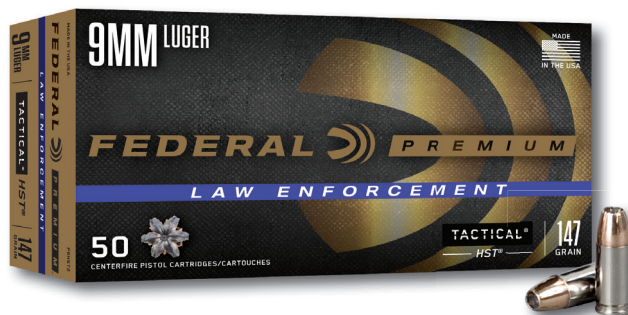
- Specially designed hollow point expands reliably through a variety of barriers
- Expanded diameter and weight retention achieve the desired penetration without over-penetrating
- Hollow-point design expands to twice the original diameter
- Bullet nose profile, nickel-plated case and Federal® primer provide the ultimate in function and reliability in semi-automatic handguns

Part Number	Cartridge	Grain	Bullet Type	Velocity	Rounds/Case
P9HST1	9mm Luger	124	HST	1150	1000
P9HST2	9mm Luger	147	HST	1000	1000
P9HST3	9mm Luger +P	124	HST	1200	1000
P357SHST1	357 Sig	125	HST	1360	1000
P357HST1S	357 Magnum	125	HST	1360	1000
P40HST3	40 S&W	165	HST	1130	1000
P40HST1	40 S&W	180	HST	1010	1000
P10HST1S	10mm Auto	200	HST	1130	200
P45HST2	45 Auto	230	HST	890	1000
P45HST1	45 Auto +P	230	HST	950	1000



**TRIPLE threat:
EXPANSION,
RETENTION and
PENETRATION**

DUTY HANDGUN



Bare Gelatin
45 Auto 230 Grain HST
Penetration: 12.00"

Expansion: .980" DIA.
Retained Weight: 231.0 GRS.

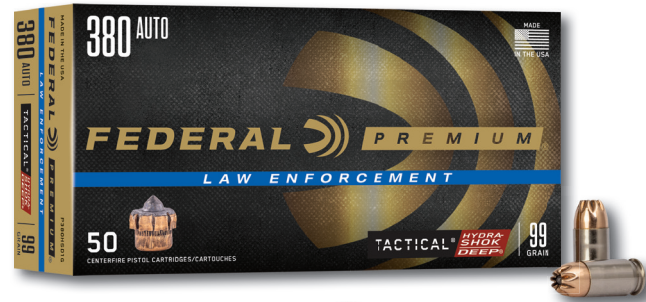


DUTY HANDGUN

TACTICAL HYDRA-SHOK DEEP®

- Hits optimum penetration depths through common barriers
- Iconic center post design has been improved for better, more consistent expansion
- Specially formulated propellant
- Extremely reliable primer
- First expanding 380 Auto to consistently penetrate beyond FBI-recommended 12-inch minimum

Part Number	Cartridge	Grain	Bullet Type	Velocity	Rounds/Case
P380HSD1G	380 Auto	99	Hydra-Shok Deep	975	1000
P38HSD1G	38 Special +P	130	Hydra-Shok Deep	900	1000



TACTICAL HYDRA-SHOK®

- Accurate with superb overall ballistic performance
- Hydra-Shok bullet's notched copper jacket initiates and controls expansion
- Center-post hollow-point design provides reliable expansion

Part Number	Cartridge	Grain	Bullet Type	Velocity	Rounds/Case
P380HS1G	380 Auto	90	Hydra-Shok JHP	1000	1000
P9HS1G1	9mm Luger	124	Hydra-Shok JHP	1120	1000
P38HS1G	38 Special +P	129	Hydra-Shok JHP	950	1000
P40HS3G	40 S&W	165	Hydra-Shok JHP	980	1000
P45HS1G	45 Auto	230	Hydra-Shok JHP	900	1000



FEDERAL

- Jacketed hollow-point bullet expands reliably for effective energy transfer
- Consistent, proven performance

Part Number	Cartridge	Grain	Bullet Type	Velocity	Rounds/Case
P9LFD1	9mm Luger +P	115	Lead Free HP	1200	1000
9BP	9mm Luger	115	JHP	1180	1000
9MS	9mm Luger	147	JHP	1000	1000
9BPLE	9mm Luger +P+	115	JHP	1300	1000
38G	38 Special +P	158	JHP	900	1000
40SWB	40 S&W	155	JHP	1150	1000
40SWA	40 S&W	180	JHP	1000	1000
45D	45 Auto	230	JHP	850	1000



FEDERAL PREMIUM DUTY HANDGUN

CALIBER	WEIGHT GRAINS	WEIGHT GRAMS	BULLET STYLE	LOAD NO.	PRIMER NO.	MUZZLE	VELOCITY IN FPS				MUZZLE	ENERGY IN FT LBS				TRAJECTORY				TEST BARREL
							25	50	75	100		25	50	75	100	25	50	75	100	
TACTICAL® HST®																				
9mm Luger	124	8.04	HST	P9HST1	200	1150	1095	1049	1010	977	364	330	303	281	263	⊕	-0.9	-3.8	-8.8	4
9mm Luger	147	9.53	HST	P9HST2	200	1000	976	953	933	914	326	311	297	284	273	⊕	-1.4	-5.2	-11.5	4
9mm Luger +P	124	8.04	HST	P9HST3	200	1200	1136	1083	1039	1002	396	355	323	297	277	⊕	-0.8	-3.4	-8.0	4
357 Sig	125	8.10	HST	P357SHST1	200	1360	1275	1200	1136	1083	513	451	400	358	326	⊕	-0.4	-2.4	-6.0	4
357 Magnum	125	8.10	HST	P357HST1S	200	1360	1275	1200	1136	1083	513	451	400	358	326	⊕	-0.4	-2.4	-6	4
40 S&W	165	10.69	HST	P40HST3	200	1130	1078	1035	999	967	468	426	392	365	342	⊕	-1.0	-4.0	-9.1	4
40 S&W	180	11.66	HST	P40HST1	200	1010	980	954	930	908	408	384	364	346	329	⊕	-1.4	-5.1	-11.4	4
45 Auto	230	14.90	HST	P45HST2	150	890	872	856	840	824	404	389	374	360	347	⊕	-2.0	-6.9	-15.0	5
45 Auto +P	230	14.90	HST	P45HST1	150	950	929	909	890	873	461	440	422	405	389	⊕	-1.6	-5.9	-12.8	5
10mm	200	12.96	HST	P10HST1S	150	1130	1102	1077	1053	1032	567	539	515	493	473	⊕	-0.9	-3.7	-8.4	5
HYDRA-SHOK DEEP®																				
380 Auto	99	6.42	Hydra-Shok JHP	P380HSD1	500	1000	949	907	869	835	220	198	181	166	153	⊕	-1.5	-5.7	-12.7	3.75
38 Special +P	130	8.42	Hydra-Shok JHP	P38HSD1	100	900	877	856	836	816	234	222	211	202	192	⊕	-1.9	-6.9	-14.9	4 VB
TACTICAL® HYDRA-SHOK®																				
380 Auto	90	5.83	Hydra-Shok JHP	P380HS1G	100	1000	953	914	879	847	200	182	167	154	143	⊕	-1.5	-5.6	-12.5	3.75
9mm Luger	124	8.04	Hydra-Shok JHP	P9HS1G1	200	1120	1070	1028	993	961	345	315	291	271	255	⊕	-1.0	-4.0	-9.3	4
38 Special +P	129	8.36	Hydra-Shok JHP	P38HS1G	100	950	926	904	884	865	258	246	234	224	214	⊕	-1.6	-5.9	-13.0	4 VB
40 S&W	165	10.69	Hydra-Shok JHP	P40HS3G	100	980	950	924	899	876	352	331	312	296	281	⊕	-1.5	-5.6	-12.3	4
45 Auto	230	14.90	Hydra-Shok JHP	P45HS1G	200	900	882	865	848	832	414	397	382	367	354	⊕	-1.9	-6.7	-14.6	5
FEDERAL®																				
9mm Luger	115	7.45	JHP	9BP	200	1180	1106	1048	1001	961	356	312	280	256	236	⊕	-0.9	-3.7	-8.7	4
9mm Luger	147	9.53	JHP	9MS	200	1000	976	953	933	914	326	311	297	284	273	⊕	-1.4	-5.2	-11.5	4
9mm Luger +P+	115	7.45	JHP	9BPLE	200	1300	1204	1125	1063	1013	432	370	323	288	262	⊕	-0.6	-2.9	-7.1	4
38 Special +P	158	10.24	Semi-Wadcutter HP	38G	100	900	883	866	851	836	284	273	263	254	245	⊕	-1.9	-6.7	-14.5	4 VB
40 S&W	155	10.04	JHP	40SWB	100	1150	1087	1036	994	959	455	407	370	340	316	⊕	-0.9	-3.9	-9.0	4
40 S&W	180	11.66	JHP	40SWA	100	1000	972	946	923	901	400	377	358	340	324	⊕	-1.4	-5.3	-11.6	4
45 Auto	185	11.99	JHP	45C	150	950	923	899	876	855	371	350	332	315	300	⊕	-1.7	-6.0	-13.1	5
45 Auto	230	14.90	JHP	45D	150	850	834	819	804	790	369	355	343	330	319	⊕	-2.2	-7.7	-16.4	5
9mm Luger +P	115	7.45	Lead Free HP	P9LFD1	200NX	1200	1116	1051	999	957	368	318	282	255	234	⊕	-0.8	-3.7	-8.6	4

HP—Hollow Point JHP—Jacketed Hollow Point VB—Vented Test Barrel (simulating revolver performance) Purchasers must be able to affirm that +P+ ammunition is for law enforcement/government use only. These trajectory tables were calculated by computer using the best available data for each load. Trajectories are representative of the normal behavior of each load at standard conditions 59°F temperature; barometric pressure of 29.53 inches; altitude at sea level. Shooters are cautioned that actual trajectories may differ due to variations in altitude, atmospheric conditions, guns, sights, and ammunition. Midrange Trajectory is the maximum bullet rise between muzzle bore and given range when zeroed at given range. Height of bullet trajectory above or below line of sight if zeroed at 100 yards. Sights 1.5 inches above bore line. *Bullet path in inches relative to line of sight when sighted for 25 yards (sight height 0.9 inch above centerline of bore). Test barrels used to determine ballistics information. Individual firearms may vary. These values are approximate and provided for reference only.

HANDGUN BULLET STYLES

The projectile itself plays a tremendous role in how a given handgun round performs and how it should be used. That's why manufacturers have developed a vast array of bullets, each designed around a specific purpose. For defense and duty rounds, it's critical that the bullet expands consistently. This increases the size of the crushing path of the bullet, as well as serves to prevent over-penetration.



Tactical Ballistic Tip

SEMI-WADCUTTER HOLLOW POINT

- Designed to cut clean holes in paper targets
- Lead construction



American Eagle® FMJ

FULL METAL JACKET

- Ball ammunition
- Feeds reliably in semi-auto handguns
- Does not expand on impact
- Lead bullet covered by copper; lead base exposed



HST® & Hydra-Shok Deep®

NON-BONDED JACKETED HOLLOW-POINT

- Designed to expand
- Deep penetration
- High weight retention though all barriers



Syntech® Training Match

TOTAL SYNTHETIC JACKET (TSJ®)

- Lead core
- Polymer jacket
- Reduces barrel heat and friction
- Eliminates metal barrel fouling
- Reduces splash-back on hard targets



American Eagle® RHT

FRANGIBLE

- Breaks apart on impact with hard targets
- Minimizes splash-back
- Perfect for indoor close-range shooting
- Lead-free



LEAD ROUND NOSE

- Lead construction
- Round nose profile
- Designed for target practice



Lead-Free Duty



Lawman® TMJ®

TOTAL METAL JACKET (TMJ)

- Lead core 100 percent encapsulated by copper jacket
- Feeds reliably in semi-auto handguns
- Does not expand on impact



Gold Dot® & Gold Dot G2®

BONDED JACKETED HOLLOW-POINT

- Structural-plated, pressure-formed core
- Uni-Cor® bonding
- Consistent expansion and high weight retention
- G2 is the most technologically advanced design in the category



Solid Core

SYNTHETIC JACKET SOLID

- Deep penetration
- Non-expanding
- Polymer jacket

TRAINING HANDGUN

AMERICAN EAGLE

- Clean-burning powders
- Federal® primers and brass
- Excellent function and accuracy for training

Part Number	Cartridge	Grain	Bullet Type	Velocity	Rounds/Case
AE25AP	25 Auto	50	FMJ	760	1000
AE32AP	32 Auto	71	FMJ	900	1000
AE380AP	380 Auto	95	FMJ	980	1000
AE9DP	9mm Luger	115	FMJ	1180	1000
AE9AP	9mm Luger	124	FMJ	1150	1000
AE9FP	9mm Luger	147	FMJ FP	1000	1000
AE357S2	357 Sig	125	FMJ	1350	1000
AE38K	38 Special	130	FMJ	810	1000
AE38B	38 Special	158	LRN	770	1000
AE357A	357 Magnum	158	JSP	1240	1000
AE40R3	40 S&W	165	FMJ	1130	1000
AE40R1	40 S&W	180	FMJ	1000	1000
AE10A	10mm Auto	180	FMJ	1030	1000
AE45A	45 Auto	230	FMJ	890	1000

AMERICAN EAGLE® INDOOR RANGE TRAINING

- Bullet is encapsulated in copper for reduced lead exposure and safer indoor training
- Toxic-Metal Free® primer
- Ballistic equivalent of duty rounds

Part Number	Cartridge	Grain	Bullet Type	Velocity	Rounds/Case
AE9N1	9mm Luger	124	TMJ	1120	1000
AE9N2	9mm Luger	147	TMJ	1000	1000
AE40N1	40 S&W	180	TMJ	1000	1000
AE45N1	45 Auto	230	TMJ	850	1000

AMERICAN EAGLE INDOOR RANGE TRAINING LEAD-FREE

- Lead-free Catalyst primer
- Identical ballistics as conventional lead stypnate primers with the same reliability and shelf life
- Lead-free projectiles engineered to be as safe—or safer—than conventional jacketed lead bullets when fired against hard targets
- More reasonably priced than other lead-free options

Part Number	Cartridge	Grain	Bullet Type	Velocity	Rounds/Case
AE9LF1	9mm Luger	70	RHT	1625	500
AE380LF1	380 Auto	70	RHT	1110	500
AE38LF1	38 Special	100	RHT	960	500
AE40LF1	40 S&W	120	RHT	1330	500
AE45LF1	45 Auto	137	RHT	1200	500

FEDERAL PREMIUM LE



FEDERAL PREMIUM® LE

BALLISTICLEAN® RHT®

- Reduced hazard training projectile
- Non-toxic frangible bullets break up on impact with metal targets
- Felt recoil, accuracy and point of impact are comparable to service ammunition
- High-performance lead-free Catalyst™ primer

Part Number	Cartridge	Grain	Bullet Type	Velocity	Rounds/Case
BC9P1	9mm Luger	98	RHT	1240	1000
BC9NT3	9mm Luger	100	SinterFire® RHT	1240	1000
BC9H1	9mm Luger	100	RHT	1270	1000
BC357SNT3	357 Sig	100	SinterFire RHT	1480	1000
BC40P1	40 S&W	125	RHT	1300	1000
BC40CT1	40 S&W	125	SinterFire RHT	1300	1000
BC45CT1	45 Auto	155	SinterFire RHT	1130	1000

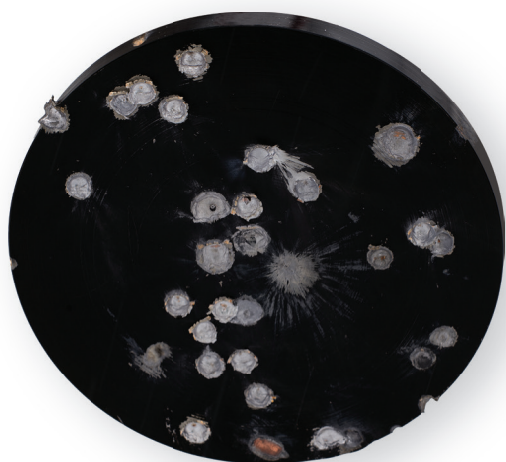
TRAINING HANDGUN



SYNTECH RANGE™

- TSJ® eliminates copper and lead fouling
- Lead-free Catalyst™ primer ignition
- Clean-burning propellants minimize residue and fouling

Part Number	Cartridge	Grain	Bullet Type	Velocity	Rounds/Case
AE9SJ2	9mm Luger	124	TSJ	1050	500
AE40SJ1	40 S&W	165	TSJ	1050	500
AE45SJ1	45 Auto	230	TSJ	830	500



SAFER ON STEEL

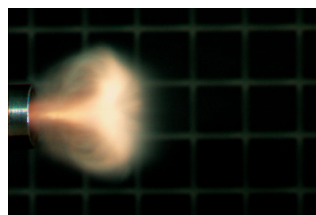
Without a copper jacket, Syntech drastically reduces the amount of splashback on steel targets.



CATALYST PRIMER TECHNOLOGY

Catalyst™ lead-free primer technology provides the most reliable, consistent ignition possible in handgun range ammunition.

PRIMER IGNITION



▲ Basic Lead Styphnate



▲ Catalyst

TRAINING HANDGUN

FEDERAL PREMIUM LE

SYNTECH TRAINING MATCH™

- Identical point of impact, velocity and trajectory as equivalent Tactical® HST® duty loads
- Extremely realistic and effective practice
- Purple jacket visually identifies matched training round
- Catalyst lead-free primer and polymer-jacketed projectile



Part Number	Cartridge	Grain	Bullet Type	Velocity	Rounds/Case
AE9SJ3	9mm Luger	147	TSJ	1000	500
AE9SJ4	9mm Luger	124	TSJ	1150	500
AE40SJ2	40 S&W	180	TSJ	1010	500
AE45SJ2	45 Auto	230	TSJ	890	500

FEDERAL PREMIUM TRAINING HANDGUN

CALIBER	WEIGHT GRAINS	WEIGHT GRAMS	BULLET STYLE	LOAD NO.	PRIMER NO.	VELOCITY IN FPS					ENERGY IN FT LBS				TRAJECTORY				TEST BARREL	
						MUZZLE	25	50	75	100	MUZZLE	25	50	75	100	25	50	75		100
BALLISTICLEAN® RHT®																				
9mm Luger	98	6.35	RHT	BC9P1	200NT	1240	1147	1075	1019	973	335	287	251	226	206	⊕	-0.7	-3.4	-8.1	4
9mm Luger	100	6.48	RHT	BC9NT3	200NT	1240	1147	1075	1019	973	341	292	257	230	210	⊕	-0.7	-3.4	-8.1	4
9mm Luger	100	6.48	RHT	BC9H1	200NX	1270	1172	1094	1033	985	358	305	266	237	215	⊕	-0.7	-3.2	-7.7	4
357 Sig	100	6.48	RHT	BC357SNT3	200	1480	1351	1239	1147	1074	486	405	341	292	256	⊕	-0.3	-2.0	-5.4	4
40 S&W	125	8.10	RHT	BC40P1	205NT	1160	1070	1004	952	909	373	318	280	252	229	⊕	-1.0	-4.1	-9.6	4
40 S&W	125	8.10	RHT	BC40CT1	205NT	1300	1176	1082	1013	959	469	384	325	285	255	⊕	-0.7	-3.2	-7.8	4
45 Auto	155	10.04	RHT	BC45CT1	200NT	1130	1062	1008	964	926	439	388	350	320	295	⊕	-1.0	-4.2	-9.7	5
AMERICAN EAGLE® INDOOR RANGE TRAINING																				
9mm Luger	124	8.04	TMJ	AE9N1	205TMF	1120	1070	1028	993	961	345	315	291	271	255	⊕	-1.0	-4.0	-9.3	4
9mm Luger	147	9.53	TMJ	AE9N2	205TMF	1000	976	953	933	914	326	311	297	284	273	⊕	-1.4	-5.2	-11.5	4
40 S&W	180	11.66	TMJ	AE40N1	205TMF	1000	972	946	923	901	400	377	358	340	324	⊕	-1.4	-5.3	-11.6	4
45 Auto	230	14.90	TMJ	AE45N1	200NX	850	834	819	804	790	369	355	343	330	319	⊕	-2.2	-7.7	-16.4	5
AMERICAN EAGLE® INDOOR RANGE TRAINING LEAD-FREE																				
9mm Luger	70	4.54	RHT	AE9LF1	200NX	1625	1457	1312	1190	1096	410	330	268	220	187	⊕	-0.1	-1.5	-4.4	4
380 Auto	70	4.54	RHT	AE380LF1	200NX	1110	1035	977	930	890	191	166	148	135	123	⊕	-1.1	-4.5	-10.4	3.75
38 Special	100	6.48	RHT	AE38LF1	200NX	960	935	913	892	872	205	194	185	177	169	⊕	-1.6	-5.8	-12.7	4 VB
40 S&W	120	7.78	RHT	AE40LF1	200NX	1330	1199	1099	1026	970	471	383	322	280	251	⊕	-0.6	-3.0	-7.4	4
45 Auto	137	8.88	RHT	AE45LF1	200NX	1200	1136	1083	1039	1002	438	393	357	329	306	⊕	-0.8	-3.4	-8.0	5
AMERICAN EAGLE®																				
25 Auto	50	3.24	FMJ	AE25AP	200	760	738	717	697	677	64	60	57	54	51	⊕	-3.1	-10.4	-22.1	2
32 Auto	71	4.60	FMJ	AE32AP	100	900	872	846	821	798	128	120	113	106	100	⊕	-2.0	-7.0	-15.2	4
380 Auto	95	6.16	FMJ	AE380AP	100	980	937	899	865	835	203	185	170	158	147	⊕	-1.6	-5.8	-13.0	3.75
9mm Luger	115	7.45	FMJ	AE9DP	200	1180	1106	1048	1001	961	356	312	280	256	236	⊕	-0.9	-3.7	-8.7	4
9mm Luger	124	8.04	FMJ	AE9AP	200	1150	1095	1049	1010	977	364	330	303	281	263	⊕	-0.9	-3.8	-8.8	4
9mm Luger	147	9.53	FMJ FP	AE9FP	200	1000	976	953	933	914	326	311	297	284	273	⊕	-1.4	-5.2	-11.5	4
357 Sig	125	8.10	FMJ	AE357S2	200	1350	1266	1192	1130	1078	506	445	395	354	323	⊕	-0.5	-2.4	-6.1	4
38 Special	130	8.42	FMJ	AE38K	100	890	870	852	834	817	229	219	209	201	193	⊕	-2.0	-7.0	-15.1	4 VB
38 Special	158	10.24	LRN	AE38B	100	770	758	745	733	722	208	201	195	189	183	⊕	-2.9	-9.8	-20.7	4 VB
357 Magnum	158	10.24	JSP	AE357A	100	1240	1187	1139	1098	1063	539	494	455	423	396	⊕	-0.6	-3.0	-7.1	4 VB
40 S&W	165	10.69	FMJ	AE40R3	100	1130	1078	1035	999	967	468	426	392	365	342	⊕	-1.0	-4.0	-9.1	4
40 S&W	180	11.66	FMJ	AE40R1	100	1000	972	946	923	901	400	377	358	340	324	⊕	-1.4	-5.3	-11.6	4
10mm Auto	180	11.66	FMJ	AE10A	150	1030	998	970	945	921	424	398	376	357	339	⊕	-1.3	-4.9	-10.9	5
45 Auto	230	14.90	FMJ	AE45A	200	890	872	856	840	824	404	389	374	360	347	⊕	-2.0	-6.9	-15.0	5
SYNTECH RANGE™																				
38 Special	148	9.59	TSJ	AE38SJ1	100	725	710	695	681	667	173	166	159	152	146	⊕	-3.4	-11.2	-23.8	4 VB
9mm Luger	115	7.45	TSJ	AE9SJ1	100	1130	1080	1038	1002	971	326	298	275	256	241	⊕	-1.0	-3.9	-9.1	4
9mm Luger	124	8.04	TSJ	AE9SJ2	100	1050	1011	978	949	922	304	282	263	248	234	⊕	-1.2	-4.7	-10.6	4
40 S&W	165	10.69	TSJ	AE40SJ1	100	1050	1014	982	954	928	404	376	353	333	316	⊕	-1.2	-4.7	-10.6	4
45 Auto	230	14.90	TSJ	AE45SJ1	200NX	830	821	812	803	795	352	344	337	329	322	⊕	-2.3	-7.9	-16.8	5
SYNTECH® TRAINING MATCH™																				
9mm Luger	124	8.04	TSJ	AE9SJ4	100	1150	1064	1000	949	907	364	312	275	248	226	⊕	-1.0	-4.2	-9.8	4
9mm Luger	147	9.53	TSJ	AE9SJ3	100	1100	1053	1014	980	951	395	362	336	314	295	⊕	-1.1	-4.2	-9.6	4
40 S&W	180	11.66	TSJ	AE40SJ2	100	1010	958	914	876	842	408	367	334	307	283	⊕	-1.5	-5.5	-12.4	4
45 AUTO	230	14.90	TSJ	AE45SJ2	200NX	890	855	824	794	767	404	374	346	322	300	⊕	-2.1	-7.3	-16.0	5

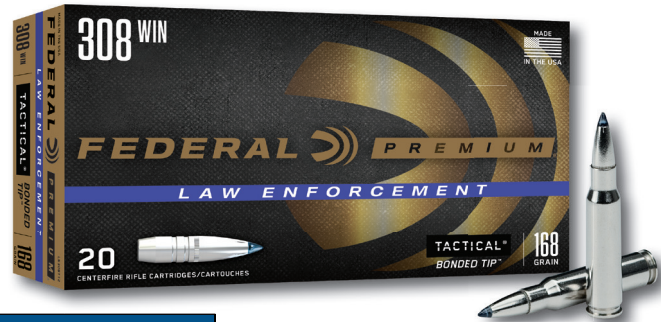
FMJ—Full Metal Jacket TMJ—Total Metal Jacket FP—Flat Point JSP—Jacketed Soft Point VB—Vented Test Barrel (simulating revolver performance) TSJ—Total Syntech Jacket

These trajectory tables were calculated by computer using the best available data for each load. Trajectories are representative of the normal behavior of each load at standard conditions 59°F temperature; barometric pressure of 29.53 inches; altitude at sea level. Shooters are cautioned that actual trajectories may differ due to variations in altitude, atmospheric conditions, guns, sights, and ammunition. Midrange Trajectory is the maximum bullet rise between muzzle bore and given range when zeroed at given range. Height of bullet trajectory above or below line of sight if zeroed at 100 yards. Sights 1.5 inches above bore line.

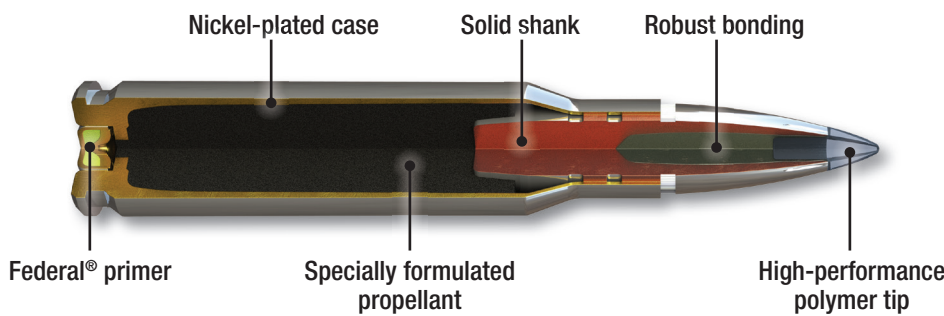
*Bullet path in inches relative to line of sight when sighted for 25 yards (sight height 0.9 inch above centerline of bore). Test barrels used to determine ballistics information. Individual firearms may vary. These values are approximate and provided for reference only.

TACTICAL® BONDED TIP™

- Engineered for minimal deflection and maximum weight retention
- Consistent penetration when shot through various intermediate barriers
- Polymer tip and boat-tail design increase ballistic coefficient and improve downrange performance



Part Number	Cartridge	Grain	Bullet Type	Velocity	Rounds/Case
LE308TT2	308 Win.	168	Tactical Bonded Tip	2650	200



RIFLE BULLET STYLES

Although they started off as just simple lead balls, rifle projectiles have evolved dramatically over the centuries, growing into a large and diverse array of purpose-built bullets. Each design's profile, materials and features allow it to perform a specific task.



BONDED TIPPED

- Precision polymer tip
- Consistent expansion
- Increased ballistic coefficient for flatter trajectories



OPEN TIP MATCH

- Match-grade bullet
- Accurate and aerodynamic
- Precision manufactured



CUP AND CORE TIPPED (NON-BONDED)

- Cup and core design
- Polymer tip
- Flatter trajectories and rapid expansion on impact at longer range



CUP AND CORE (NON-BONDED)

- Proven cup and core construction
- Uniform jacket and lead core
- Reliable accuracy and fast expansion



RAPIDLY EXPANDING TIPPED

- Fast, flat-shooting and versatile
- Wind-defying performance
- Minimizes drag
- Shallow penetration

Tactical Ballistic Tip



FRANGIBLE

- Breaks apart on impact with hard targets
- Minimizes splash-back
- Perfect for indoor close-range shooting

American Eagle® RHT



BONDED SOFT POINT

- Consistent copper jacket bonded to lead core
- Increased weight retention
- Large expansion
- Deep penetration

Gold Dot®



BOAT-TAIL HOLLOW POINT

- Match-grade bullet
- Tapered at the back or end of shank for less wind drag and flatter shooting
- Accurate and consistent

Sierra® MatchKing®



SOLID

- Used on world's largest, most dangerous game
- Maximum penetration and weight retention
- Flat nose minimizes deflection

Trophy Bonded® Sledgehammer® Solid



FMJ

- Military-style bullet
- Does not expand
- Jacket extends from the nose to the bottom of the bullet

FMJ

DUTY RIFLE

FEDERAL PREMIUM LE

TACTICAL TRU®

- Match-grade accuracy
- Tactical Ballistic Tip provides extreme terminal performance while minimizing the risk of overpenetration
- Low-flash powders and crimped primers
- TRU bullet designs range from limited penetration for tactical entry to full penetration for patrol



Part Number	Cartridge	Grain	Bullet Type	Velocity	Rounds/Case
T223T	223 Rem.	55	Nosler Ballistic Tip	3220	500
T223E	223 Rem.	55	Sierra BTHP	3220	500
T223A	223 Rem.	55	Hi-Shok SP	3220	500
T223L	223 Rem.	64	Hi-Shok SP	3050	500
T300BLKB	300 Blk.	110	Barnes TSX	2150	500
T65CRDTTMK1	6.5 Creedmoor	140	Tactical Tip MatchKing	2675	500
T308T	308 Win.	168	Tactical Tip MatchKing	2650	500
T308TTMK2	308 Win.	175	Tactical Tip MatchKing	2600	500

TACTICAL BONDED

NEW!

- New 64-grain 5.56x45mm offering's bullet and propellant are optimized for short-barrel duty rifles
- Tough bonded bullet design
- Unmatched accuracy and terminal performance
- Defeats the most challenging barriers with minimal deflection



Part Number	Cartridge	Grain	Bullet Type	Vel. 18 Barrel	Vel. 14.5 Barrel	Vel. 11 Barrel	Rounds/Case
LE223T1	223 Rem.	55	Bonded SP	3020	2740	2500	200
LE223T3	223 Rem.	62	Bonded SP	2920	2700	2500	200
LE556T4*	5.56x45mm	64	Bonded SP	3060	2850	2680	200

NEW

*Muzzle velocities are measured at 15 feet

FEDERAL PREMIUM® LE

GOLD MEDAL®

- High-quality brass loaded with superior powder and benchrest-quality primers
- CenterStrike™, Berger® Hybrid and Sierra® MatchKing® bullet options offer superior accuracy
- Provides accuracy at long range, even under adverse conditions

DUTY RIFLE



Part Number	Cartridge	Grain	Bullet Type	Velocity	Rounds/Case
GM223M	223 Rem.	69	Sierra MatchKing BTHP	2950	200
GM223OTM3	223 Rem.	77	CenterStrike OTM	2720	200
GM223BH73	223 Rem.	73	Berger BT Target	2800	200
GM223M3	223 Rem.	77	Sierra MatchKing BTHP	2720	200
GM224VLKBH2	224 Valkyrie	80.5	Berger Hybrid	2925	200
GM224VLK1	224 Valkyrie	90	Sierra MatchKing BTHP	2700	200
GM6CRDBH1	6mm Creedmoor	105	Berger Hybrid	3025	200
GM6CRDM1	6mm Creedmoor	107	Sierra MatchKing	3000	200
GM6CRDLRHT1	6mm Creedmoor	109	Berger LR Target	2975	200

FEDERAL PREMIUM DUTY RIFLE

CALIBER	WEIGHT GRAINS	WEIGHT GRAMS	BULLET STYLE	LOAD NO.	PRIMER NO.	MUZZLE	VELOCITY IN FPS					ENERGY IN FT LBS					
							100	200	300	400	500	MUZZLE	100	200	300	400	500
TACTICAL® BONDED																	
223 Rem. (5.56x45mm)	55	3.56	Bonded SP	LE223T1	GM205M	3150	2678	2252	1866	1530	1258	1212	876	619	425	286	193
223 Rem. (5.56x45mm)	62	4.02	Bonded SP	LE223T3	GM205M	3050	2632	2249	1900	1590	1328	1281	953	696	497	348	243
5.56x45mm	64	4.15	Bonded SP	LE556T4	GM205MAR	2950*	2541	2166	1825	1524	1277	1237	917	667	473	330	232
TACTICAL® BONDED TIP™																	
308 Win. (7.62 x 51mm)	168	10.89	Tactical Bonded Tip	LE308TT2	GM210M	2650	2456	2270	2092	1921	1761	2619	2249	1921	1632	1377	1157
TACTICAL® TRU®																	
223 Rem. (5.56x45mm)	55	3.56	Nosler Ballistic Tip	T223T	GM205M	3220	2853	2514	2199	1908	1644	1266	994	772	591	444	330
223 Rem. (5.56x45mm)	55	3.56	Sierra BTHP	T223E	GM205M	3220	2830	2470	2140	1830	1560	1265	975	745	560	410	300
223 Rem. (5.56x45mm)	55	3.56	Hi-Shok SP	T223A	GM205M	3220	2780	2380	2020	1690	1410	1265	945	695	500	350	240
223 Rem. (5.56x45mm)	64	4.15	Hi-Shok SP	T223L	GM205M	3050	2680	2340	2030	1740	1490	1320	1020	780	585	430	315
300 Blk.	110	7.13	Barnes TSX	T300BLKB	GM205M	2150	1883	1641	1425	1246	1112	1129	866	658	496	379	302
TACTICAL® TIPPED MATCHKING																	
308 Win. (7.62x51mm)	168	10.89	Tactical Tip MatchKing	T308T	GM210M	2650	2470	2298	2132	1974	1822	2619	2276	1969	1696	1453	1238
308 Win. (7.62x51mm)	175	11.34	Tactical Tip MatchKing	T308TTMK2	GM210M	2600	2435	2277	2125	1978	1837	2627	2305	2015	1754	1520	1311
6.5 Creedmoor	140	9.07	Tactical Tip MatchKing	T65CRD1TMK1	GM205M	2675	2521	2373	2230	2091	1957	2224	1976	1750	1545	1359	1191
GOLD MEDAL®																	
223 Rem. (5.56x45mm)	69	4.47	Sierra MatchKing BTHP	GM223M	GM205M	2950	2642	2353	2084	1832	1604	1333	1069	848	665	514	394
223 Rem. (5.56x45mm)	77	4.99	OTM	GM223OTM3	GM205M	2720	2471	2235	2012	1803	1612	1265	1044	854	692	556	444
223 Rem. (5.56x45mm)	73	4.73	Berger BT Target	GM223BH73	GM205M	2800	2541	2296	2065	1847	1648	1271	1046	854	691	553	440
223 Rem. (5.56x45mm)	77	4.99	Sierra MatchKing BTHP	GM223M3	GM205M	2720	2481	2255	2041	1838	1652	1265	1053	869	712	578	466
224 Valkyrie	80.5	5.22	Berger BT Target	GM224VLKBH2	GM205M	2925	2713	2512	2318	2134	1958	1529	1316	1127	976	814	685
224 Valkyrie	90	5.83	Sierra MatchKing BTHP	GM224VLK1	GM205M	2700	2542	2388	2241	2098	1961	1457	1291	1140	1003	880	768
6mm Creedmoor	105	6.80	Berger Hybrid	GM6CRDBH1	GM210M	3025	2846	2674	2509	2350	2196	2133	1889	1668	1468	1287	1124
6mm Creedmoor	107	6.93	Sierra MatchKing BTHP	GM6CRDM1	GM210M	3000	2826	2658	2497	2341	2191	2138	1897	1679	1481	1302	1140
6mm Creedmoor	109	7.06	Berger LR Target	GM6CRDLRHT1	GM205M	2975	2808	2647	2492	2342	2197	2142	1908	1696	1503	1327	1168
6.5 Creedmoor	130	8.42	Berger Hybrid OTM	GM65CRDBH130	GM210M	2825	2661	2503	2351	2204	2062	2303	2044	1809	1595	1402	1227
6.5 Creedmoor	140	9.07	OTM	GM65CRDOTM1	GM205M	2675	2515	2360	2211	2068	1929	2224	1966	1732	1520	1329	1157
6.5 Creedmoor	140	8.42	Sierra MatchKing BTHP	GM65CRD1	GM210M	2675	2509	2350	2196	2048	1905	2224	1957	1716	1499	1303	1128
6.5 PRC	140	9.07	Gold Medal Berger Hybrid	GM65PRCBH1	GM205M	2925	2770	2621	2476	2336	2201	2659	2386	2135	1906	1696	1506
308 Win. (7.62x51mm)	168	10.89	OTM	GM308OTM1	GM210M	2650	2455	2268	2089	1918	1758	2619	2248	1918	1628	1373	1152
308 Win. (7.62x51mm)	168	10.89	Sierra MatchKing BTHP	GM308M	GM210M	2650	2460	2277	2103	1936	1778	2619	2257	1935	1650	1398	1179
308 Win. (7.62x51mm)	175	11.34	OTM	GM308OTM2	GM210M	2600	2427	2262	2102	1949	1803	2627	2290	1987	1717	1476	1264
308 Win. (7.62x51mm)	175	11.34	Sierra MatchKing BTHP	GM308M2	GM210M	2600	2427	2262	2102	1949	1803	2627	2290	1987	1717	1476	1264
308 Win. (7.62x51mm)	185	11.99	Berger Juggernaut OTM	GM308BH185	GM210M	2600	2442	2289	2143	2001	1864	2777	2449	2153	1886	1644	1428
30-06 Spring. (7.62x63mm)	168	10.89	Sierra MatchKing BTHP	GM3006M	GM210M	2700	2508	2324	2148	1980	1819	2719	2346	2015	1721	1462	1234
300 Win. Magnum	190	12.31	Sierra MatchKing BTHP	GM300WM	GM215M	2900	2725	2557	2395	2239	2089	3548	3133	2758	2420	2115	1841
300 Win. Magnum	215	13.93	Berger Hybrid	GM300WMBH1	GM215M	2825	2692	2563	2437	2315	2196	3810	3459	3135	2835	2558	2303
338 Lapua Magnum	250	16.20	Sierra MatchKing BTHP	GM338LM	GM216M	2950	2789	2634	2484	2339	2199	4830	4318	3851	3426	3037	2685
338 Lapua Magnum	300	19.44	Sierra MatchKing BTHP	GM338LM2	GM216M	2580	2466	2355	2248	2143	2040	4434	4052	3696	3365	3058	2772

*Muzzle velocity measured at 78 feet per NATO/MIL-SPEC

DUTY RIFLE

GOLD MEDAL

FEDERAL PREMIUM LE

Part Number	Cartridge	Grain	Bullet Type	Velocity	Rounds/Case
GM308OTM1	308 Win.	168	CenterStrike OTM	2650	200
GM308M	308 Win.	168	Sierra MatchKing BTHP	2650	200
GM308OTM2	308 Win.	175	CenterStrike OTM	2600	200
GM308M2	308 Win.	175	Sierra MatchKing BTHP	2600	200
GM308BH185	308 Win.	185	Berger Juggernaut OTM	2600	200
GM65CRDBH130	6.5 Creedmoor	130	Hybrid OTM	2825	200
GM65CRDOTM1	6.5 Creedmoor	140	CenterStrike OTM	2675	200
GM65CRD1	6.5 Creedmoor	140	Sierra MatchKing BTHP	2675	200
GM65PRCBH1	6.5 PRC	140	Berger Hybrid	2925	200
GM3006M	30-06 Spring.	168	Sierra MatchKing BTHP	2700	200
GM300WM	300 Win. Magnum	190	Sierra MatchKing BTHP	2900	200
GM300WMBH1	300 Win. Magnum	215	Berger Hybrid	2825	200
GM338LM	338 Lapua Magnum	250	Sierra MatchKing BTHP	2950	200
GM338LM2	338 Lapua Magnum	300	Sierra MatchKing BTHP	2580	200



SP—Soft Point BT—Boat Tail BTHP—Boat Tail Hollow Point OTM—Open Tip Match
 These trajectory tables were calculated by computer using the best available data for each load. Trajectories are representative of the normal behavior of each load at standard conditions 59°F temperature; barometric pressure of 29.53 inches; altitude at sea level. Shooters are cautioned that actual trajectories may differ due to variations in altitude, atmospheric conditions, guns, sights, and ammunition. Midrange Trajectory is the maximum bullet rise between muzzle bore and given range when zeroed at given range. Height of bullet trajectory above or below line of sight if zeroed at 100 yards. Sights 1.5 inches above bore line.

100	WINDDRIFT (YDS)				AVERAGE BULLET TRAJECTORY (YDS)				LONG RANGE BULLET TRAJECTORY (YDS)					TEST BARREL	FIRING ANGLE*	MAX DISTANCE	MAX ELEVATION	
	200	300	400	500	50	100	200	300	50	100	200	300	400					500
1.4	6.2	15.1	29.7	51.1	-0.2	⊕	-3.4	-13.7	0.6	1.7	⊕	-8.6	-27.6	-62.1	24	32	9155	2684
1.3	5.7	13.9	27.1	46.2	-0.2	⊕	-3.6	-14.0	0.7	1.8	⊕	-8.7	-27.4	-60.2	24	33	9828	2832
1.4	6	14.6	28.5	48.5	-0.2	⊕	-3.9	-15.3	0.8	2	⊕	-9.4	-29.6	-65.3	20	33	9852	2958
0.7	3.2	7.6	13.8	22.7	-0.1	⊕	-4.3	-15.4	1.0	2.1	⊕	-9.0	-25.6	-52.0	24	36	15850	4791
1.0	4.3	10.4	19.7	33.3	-0.3	⊕	-2.8	-11.1	0.4	1.4	⊕	-6.9	-21.0	-45.2	24	33	11355	3360
1.1	4.7	11.3	21.5	36.4	-0.3	⊕	-2.9	-11.5	0.4	1.4	⊕	-7.2	-22.0	-47.6	24	33	10834	3230
1.2	5.3	13.0	25.3	43.0	-0.3	⊕	-3.0	-12.2	0.5	1.5	⊕	-7.7	-24.2	-53.1	24	33	9897	2993
1.2	4.9	11.8	22.6	38.2	-0.2	⊕	-3.3	-13.1	0.6	1.7	⊕	-8.1	-24.7	-53.2	24	33	10876	3207
1.5	7.2	17.1	32.3	52.7	0.3	⊕	-8.5	-29.8	2.4	4.2	⊕	-17	-51.6	-108.8	8	35	10855	3233
0.7	2.9	6.9	12.7	20.4	-0.1	⊕	-4.2	-15.1	1.0	2.1	⊕	-8.8	-25.1	-50.2	24	37	16723	5359
0.6	2.7	6.5	11.9	19.1	-0.1	⊕	-4.4	-15.5	1.0	2.2	⊕	-9.0	-25.6	-50.8	24	37	17545	5357
0.6	2.3	5.6	10.4	16.6	-0.1	⊕	-3.9	-14.1	0.9	2.0	⊕	-8.2	-23.5	-46.4	24	38	18803	5922
1.0	4.3	10.3	19.3	32.4	-0.2	⊕	-3.5	-13.3	0.7	1.7	⊕	-8.1	-24.1	-51.0	16	34	12166	3637
0.9	4	9.5	17.7	29.5	-0.1	⊕	-4.2	-15.4	0.9	2.1	⊕	-9.1	-26.7	-55.5	24	35	13443	4035
1.0	3.9	9.4	17.4	29.1	-0.1	⊕	-3.9	-14.4	0.8	1.9	⊕	-8.6	-25.2	-52.6	24	35	13334	4033
0.9	3.8	9.0	16.7	27.9	-0.1	⊕	-4.2	-15.2	0.9	2.1	⊕	-9.0	-26.1	-54.1	24	35	13929	4165
0.7	2.9	6.7	12.5	20.1	-0.2	⊕	-3.2	-11.9	0.6	1.6	⊕	-7.1	-20.8	-42.0	24	36	16031	4925
0.6	2.4	5.7	10.6	16.9	-0.1	⊕	-3.8	-13.9	0.8	1.9	⊕	-8.1	-23.2	-45.9	24	38	18530	5863
0.5	2.2	5.1	9.4	15.3	-0.2	⊕	-2.8	-10.5	0.5	1.4	⊕	-6.2	-18.0	-36.1	24	37	18627	5839
0.5	2.2	5.2	9.3	15.1	-0.2	⊕	-2.9	-10.7	0.5	1.4	⊕	-6.4	-18.2	-36.6	24	37	18843	5885
0.5	2.2	5	9	14.6	-0.2	⊕	-2.9	-10.8	0.5	1.5	⊕	-6.4	-18.3	-36.8	24	37	19290	5991
0.6	2.3	5.4	10.0	16.1	-0.2	⊕	-3.4	-12.3	0.7	1.7	⊕	-7.2	-20.9	-41.6	24	38	18872	6044
0.6	2.5	5.9	10.9	17.4	-0.1	⊕	-4	-14.3	0.9	2	⊕	-8.3	-23.7	-47	24	38	18265	5781
0.6	2.6	6.2	11.3	18.1	-0.1	⊕	-4.0	-14.4	0.9	2.0	⊕	-8.4	-23.9	-47.5	24	37	17830	5466
0.5	2.1	4.8	8.6	13.9	-0.2	⊕	-3.1	-11.1	0.6	1.5	⊕	-6.6	-18.7	-37.5	24	38	20082	6396
0.7	3.2	7.6	13.8	22.8	-0.1	⊕	-4.3	-15.4	1	2.1	⊕	-9	-25.7	-52.1	24	37	15755	4924
0.7	3.1	7.4	13.4	22.0	-0.1	⊕	-4.3	-15.3	1.0	2.1	⊕	-8.9	-25.5	-51.5	24	37	16052	5000
0.6	2.9	6.9	12.5	20.3	-0.1	⊕	-4.4	-15.7	1	2.2	⊕	-9.1	-25.8	-51.8	24	37	16972	5212
0.6	2.9	6.9	12.5	20.3	-0.1	⊕	-4.4	-15.7	1.0	2.2	⊕	-9.1	-25.8	-51.8	24	37	17139	5255
0.6	2.6	6.2	11.3	18.2	-0.1	⊕	-4.3	-15.4	1.0	2.2	⊕	-8.9	-25.2	-50.0	24	38	18040	5682
0.7	3.0	7.2	13.2	21.3	-0.1	⊕	-4.0	-14.6	0.9	2.0	⊕	-8.5	-24.5	-49.2	24	37	16289	5083
0.6	2.4	5.5	10.1	16.4	-0.2	⊕	-3.2	-11.6	0.6	1.6	⊕	-6.9	-19.9	-39.8	24	37	18652	5787
0.5	1.9	4.3	7.8	12.7	-0.2	⊕	-3.3	-11.8	0.7	1.7	⊕	-6.9	-19.7	-39.1	24	39	21752	7041
0.5	2.1	4.9	8.8	14.3	-0.2	⊕	-3.0	-11.0	0.5	1.5	⊕	-6.5	-18.5	-37.1	24	38	19684	6301
0.4	1.8	4.3	8.0	12.8	-0.1	⊕	-4.2	-14.7	1.0	2.1	⊕	-8.5	-23.8	-46.6	24	39	22866	7244

FEDERAL PREMIUM® LE

TRAINING RIFLE

BALLISTICLEAN®

- Reduced hazard training projectile
- Non-toxic frangible bullets break up on impact with metal targets
- Felt recoil and point of impact are comparable to service ammunition
- High-performance lead-free Catalyst™ primer
- Suppressor-safe
- Designed specifically for 1:7 twist barrels



Part Number	Cartridge	Grain	Bullet Type	Velocity	Rounds/Case
BC223NT5	223 Rem.	42	RHT	3450	500
BC556NX1	5.56x45mm	50	SJF	2820*	500

*Muzzle velocity measured at 78 feet per NATO/MIL-SPEC



FEDERAL PREMIUM TRAINING RIFLE

CALIBER	WEIGHT GRAINS	WEIGHT GRAMS	BULLET STYLE	LOAD NO.	PRIMER NO.	MUZZLE	VELOCITY IN FPS					MUZZLE	ENERGY IN FT LBS				
							100	200	300	400	500		100	200	300	400	500
BALLISTICLEAN®																	
223 Rem. (5.56x45mm)	42	2.72	RHT	BC223NT5	TMF	3450	2726	2105	1580	1189	984	1110	693	413	233	132	90
5.56x45mm	50	3.24	SJF	BC556NX1	41X	2820*	2330	1891	1513	1218	1036	883	603	397	254	165	119
AMERICAN EAGLE®																	
223 Rem. (5.56x45mm)	55	3.56	FMJ	AE223NX1	205	3240	2874	2536	2222	1931	1667	1282	1008	785	603	455	339
223 Rem. (5.56x45mm)	55	3.56	FMJ-BT	AE223	205	3240	2874	2536	2222	1931	1667	1282	1008	785	603	455	339
223 Rem. (5.56x45mm)	62	4.02	FMJ-BT	AE223N	205	3020	2713	2426	2156	1904	1674	1255	1013	810	640	499	386
223 Rem. (5.56x45mm)	75	4.86	FMJ	AE223T75	205	2775	2550	2336	2132	1938	1756	1282	1083	908	757	625	514
30 Carbine	110	7.13	FMJ	AE30CB	205	1990	1564	1231	1031	919	839	967	597	370	260	206	172
224 Valkyrie	75	4.86	FMJ	AE224VLK1	205	3000	2763	2539	2325	2122	1929	1499	1272	1073	900	750	619
7.62x39mm Soviet	124	8.04	FMJ	A76239A	210	2350	2078	1824	1595	1392	1224	1520	1189	916	701	533	412
308 Win. (7.62x51mm)	150	9.72	FMJ-BT	AE308D	210	2820	2597	2385	2183	1990	1808	2648	2246	1894	1586	1319	1089
30-06 Spring. (7.62x63mm)	150	9.72	FMJ-BT	AE3006N	210	2910	2683	2466	2260	2064	1877	2820	2397	2026	1701	1419	1173

FMJ—Full Metal Jacket FMJ-BT—Full Metal Jacket Boat Tail SP—Soft Point RHT—Reduced Hazard Training SJF—Semi Jacketed Frangible

*Muzzle velocity measured at 78 feet per NATO/MIL-SPEC

TRAINING RIFLE

AMERICAN EAGLE®

- Ideal for target practice and training
- Accurate and reliable
- Available in a wide variety of calibers

Part Number	Cartridge	Grain	Bullet Type	Velocity	Rounds/Case
AE223	223 Rem.	55	FMJ BT	3240	500
AE223N	223 Rem.	62	FMJ BT	3020	500
AE223T75	223 Rem.	75	FMJ	2775	500
AE224VLK1	224 Valkyrie	75	TMJ	3000	200
AE30CB	30 Carbine	110	FMJ	1990	500
A76239A	7.62x39mm Soviet	124	FMJ	2350	500
AE308D	308 Win.	150	FMJ BT	2820	500
AE3006N	30-06 Spring.	150	FMJ BT	2910	500

AMERICAN EAGLE WITH CATALYST PRIMER

- Similar ballistics as duty loads
- Catalyst™ lead-free primer offers the same reliability as lead-styphnate primers
- Accurate and consistent
- Federal brass

Part Number	Cartridge	Grain	Bullet Type	Velocity	Rounds/Case
AE223NX1	223 Rem.	55	FMJ	3240	500

FEDERAL PREMIUM LE



100	WINDDRIFT (YDS)					AVERAGE BULLET TRAJECTORY (YDS)					LONG RANGE BULLET TRAJECTORY (YDS)					TEST BARREL	ESTIMATED EXTREME RANGE		
	200	300	400	500	50	100	200	300	50	100	200	300	400	500	FIRING ANGLE*		MAX DISTANCE	MAX ELEVATION	
1.9	8.7	22.4	45.9	79.9	-0.3	⊕	-3.3	-14.8	0.5	1.6	⊕	-9.8	-34.7	-85.0	24	30	6900	1976	
1.9	8.3	20.8	41.2	69.8	-0.1	⊕	-5	-20	1.2	2.5	⊕	-12.5	-40.8	-93.4	20	32	8163	2393	
1.0	4.3	10.2	19.4	32.7	-0.3	⊕	-2.7	-10.9	0.4	1.4	⊕	-6.8	-20.6	-44.2	24	33	11472	3393	
1.0	4.3	10.2	19.4	32.7	-0.3	⊕	-2.7	-10.9	0.4	1.4	⊕	-6.8	-20.6	-44.2	24	33	11382	3370	
1.0	4.0	9.7	18.1	30.4	-0.2	⊕	-3.2	-12.4	0.6	1.6	⊕	-7.6	-22.6	-47.6	24	34	12338	3697	
0.8	3.4	8.1	14.9	24.6	-0.1	⊕	-3.8	-14.1	0.8	1.9	⊕	-8.4	-24.2	-49.6	24	36	14707	4531	
3.5	15.1	35.8	63.7	97.4	0.7	⊕	-13.0	-49.1	3.9	6.5	⊕	-29.7	-90.9	-190.2	18	32	7029	1998	
0.7	3.1	7.2	13.4	21.8	0.2	⊕	-3.1	-11.5	0.5	1.5	⊕	-6.9	-20.4	-41.5	24	36	15060	4701	
1.5	6.0	14.7	27.6	45.7	0.1	⊕	-6.5	-23.8	1.8	3.3	⊕	-14.0	-41.5	-87.5	20	35	11257	3373	
0.8	3.3	7.8	14.4	23.3	-0.2	⊕	-3.6	-13.5	0.8	1.8	⊕	-8.0	-23.3	-47.2	24	36	15137	4657	
0.8	3.2	7.4	13.7	22.2	-0.2	⊕	-3.3	-12.4	0.6	1.7	⊕	-7.4	-21.7	-43.8	24	36	15012	4657	

These trajectory tables were calculated by computer using the best available data for each load. Trajectories are representative of the normal behavior of each load at standard conditions 59°F temperature; barometric pressure of 29.53 inches; altitude at sea level. Shooters are cautioned that actual trajectories may differ due to variations in altitude, atmospheric conditions, guns, sights, and ammunition. Midrange Trajectory is the maximum bullet rise between muzzle bore and given range when zeroed at given range. Height of bullet trajectory above or below line of sight if zeroed at 100 yards. Sights 1.5 inches above bore line.

FEDERAL PREMIUM® LE

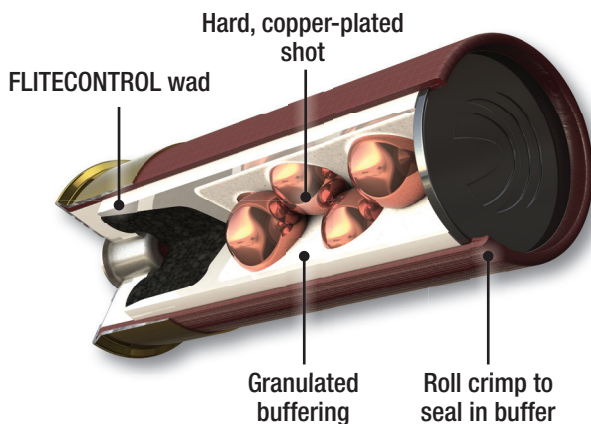
BUCKSHOT

TACTICAL® BUCKSHOT WITH FLITECONTROL® WAD

- Hard, copper-plated shot provides better penetration
- FLITECONTROL wad produces extremely tight, consistent patterns
- One-piece hull with integral base wad
- Granulated buffering prevents pellet deformation

Part Number	Gauge	Inches	Payload	Shot	Velocity	Rounds/Case
LE127 00	12	2 3/4	9 Pellets	00 Buck	1325	250
LE132 00*	12	2 3/4	9 Pellets	00 Buck	1145	250
LE133 00*	12	2 3/4	8 Pellets	00 Buck	1145	250
LER127 00**	12	2 3/4	9 Pellets	00 Buck	1325	250
LER132 00**	12	2 3/4	9 Pellets	00 Buck	1145	250
LER133 00**	12	2 3/4	8 Pellets	00 Buck	1145	250

*Reduced recoil **25 Count box, roll crimp



The FLITECONTROL wad keeps patterns tight. Target shot from 7 yards with LE127 00.

Where unwavering **ACCURACY** and **RELIABILITY** come together

PREMIUM BUCKSHOT

- Copper-plated shot for tight patterns and great downrange energy
- Puts more pellets on target for impressive stopping power

Part Number	Gauge	Inches	Payload	Shot	Velocity	Rounds/Case
P154 00	12	2 3/4	9 Pellets	00 Buck	1325	250
P156 00	12	2 3/4	12 Pellets	00 Buck	1290	250



BUCKSHOT & TARGET

BALLISTICLEAN® FRANGIBLE BUCKSHOT

- 100 percent lead-free Catalyst primer
- Primer compound is non-hygroscopic, has no shelf life and easily ignites a large variety of shotshell powders
- Lead-free frangible pellets reduce splash-back on steel targets
- Clean and consistent
- Provides ballistic performance and feel almost identical to duty loads

Part Number	Gauge	Inches	Payload	Shot	Velocity	Rounds/Case
BC132 00	12	2 3/4	9 Pellet	00 Buck	1500	250

POWER•SHOK® BUCKSHOT

- Triple Plus® wad system provides better shot alignment
- Granulated plastic buffer prevents pellet deformation
- Tight, predictable downrange patterns and stopping power

Part Number	Gauge	Inches	Payload	Shot	Velocity	Rounds/Case
F130 00	12	2 3/4	12 Pellets	00 Buck	1290	250
F1274B	12	2 3/4	27 Pellets	4 Buck	1325	250
F127 000	12	2 3/4	8 Pellets	000 Buck	1325	250
F127 00	12	2 3/4	9 Pellets	00 Buck	1325	250
H132 00*	12	2 3/4	9 Pellets	00 Buck	1140	250

*Reduced recoil

TOP GUN® TARGET LOADS

- Hard shot
- Consistent, reliable Federal primer
- Eight-segment crimp
- Triple Plus® wad column for consistent pattern

Part Number	Gauge	Inches	Ounces	Shot	Dram Eq.	Velocity	Rounds/Case
TG12 7.5	12	2 3/4	1 1/8	7.5	3	1200	250
TG12 8	12	2 3/4	1 1/8	8	3	1200	250
TGL12 7.5	12	2 3/4	1 1/8	7.5	2 3/4	1145	250
TGL12 8	12	2 3/4	1 1/8	8	2 3/4	1145	250
TGL12 9	12	2 3/4	1 1/8	9	2 3/4	1145	250
TG20 7.5	20	2 3/4	7/8	7.5	2 1/2	1210	250
TG20 8	20	2 3/4	7/8	8	2 1/2	1210	250
TG20 9	20	2 3/4	7/8	9	2 1/2	1210	250

FEDERAL PREMIUM LE



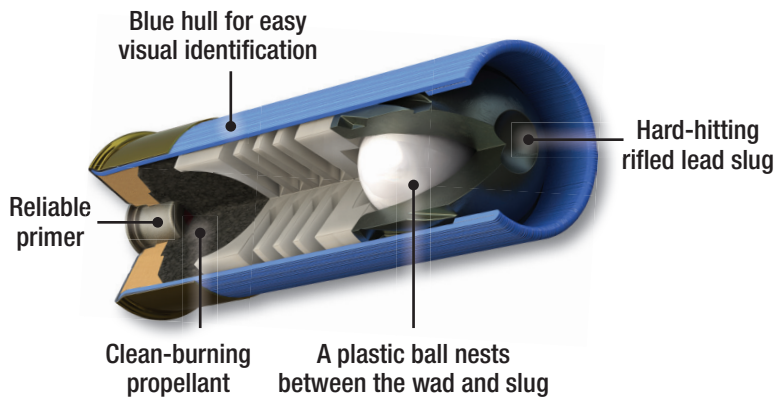
FEDERAL PREMIUM® LE

SLUGS

TACTICAL® TRUBALL® RIFLED SLUG

- A plastic ball between the wad and slug increases smoothbore accuracy
- Capable of 2-inch groups at 50 yards
- Clean separation of components after muzzle exit
- Blue hull for easy visual identification

Part Number	Gauge	Inches	Ounces	Grain	Velocity	Rounds/Case
LEB127 LRS	12	2 3/4	1	438	1300	250
LEB127 RS	12	2 3/4	1	438	1600	250



TACTICAL TRUBALL DEEP PENETRATOR

- Slug design offers the same accuracy and consistency of the original TruBall
- Slug hardness ensures better terminal performance
- Performs extremely well through barriers

Part Number	Gauge	Inches	Ounces	Grain	Velocity	Rounds/Case
LEB127 DPRS	12	2 3/4	1	438	1350	250



TACTICAL RIFLED SLUG

- 1-ounce Hydra-Shok® slug excels in standard FBI test protocols
- Dynamic expansion without over-penetration

Part Number	Gauge	Inches	Ounces	Grain	Bullet Type	Velocity	Rounds/Case
LE127 RS	12	2 3/4	1	438	Hydra-Shok HP	1300	250



SLUGS

BALLISTICLEAN® FRANGIBLE SLUG

- 100 percent lead-free Catalyst primer
- Primer compound is non-hygroscopic, has no shelf life and easily ignites a large variety of shotshell powders
- Lead-free frangible slugs reduce splash-back on steel targets
- Clean and consistent
- Provides ballistic performance and feel almost identical to duty loads

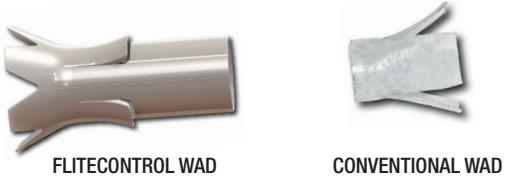
Part Number	Gauge	Inches	Ounces	Grain	Velocity	Rounds/Case
BC127 RS	12	2 3/4	3/4	325	1600	250

FEDERAL PREMIUM LE



CONVENTIONAL WADS VS. FLITECONTROL®

Conventional shotshell wads peel open from the front, allowing pellets to scatter, resulting in fewer hits on target. The FLITECONTROL wad is completely different. It features petals that open from the rear as the wad leaves the muzzle, creating an air brake. This allows for a clean, perfectly timed release of the payload for dense, consistent patterns.



SLUG TYPES

Rifled Slugs
 Contrary to their name, rifled slugs are designed to be fired through smoothbore shotgun barrels. Also known as Foster-style slugs, they generally feature ribbing on the sides of the lead projectile and a hollow point. The design typically has a much shorter effective range than comparable sabot slugs.



- TruBall® Rifled Slug**
- Plastic ball between the wad and slug increases smoothbore accuracy
 - Capable of 1.4-inch groups at 50 yards Increased downrange energy
 - Clean separation of components after muzzle exit
 - Harder lead in TruBall Deep Penetrator yields more penetration

POWER·SHOK® RIFLED SLUG

- Available in 1-ounce and 1¼-ounce options
- Powerful loads
- Reliable performance at an affordable price

Part Number	Gauge	Inches	Ounces	Grain	Bullet Type	Velocity	Rounds/Case
F130 RS	12	2 3/4	1 1/4	547	Hollow Point	1520	250
F127 RS	12	2 3/4	1	438	Hollow Point	1610	250



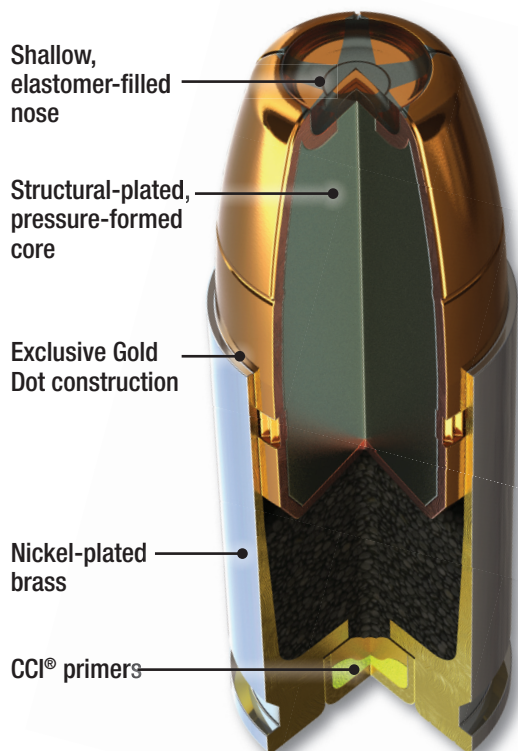
GOLD DOT® G2®

For years, Speer Gold Dot has been the pinnacle of duty handgun ammunition performance. Gold Dot G2 builds on this reputation with a next-generation duty bullet design. Instead of a large cavity in the nose, Gold Dot G2 has only a shallow dish filled with a high-performance elastomer. On impact, the elastomer is forced into engineered internal fissures to start the expansion process, as opposed to conventional bullet designs, which rely on target media to enter the hollow-point and create expansion forces. The result is extremely uniform expansion, better separation of the petals, and more consistent penetration across barrier types, gun platforms and barrel lengths.

- Shallow-dished, elastomer-filled nose
- Elastomer forced into engineered internal fissures starts the expansion process
- Extremely uniform expansion and penetration
- Exclusive Gold Dot construction virtually eliminates core/jacket separation
- Structural-plated, pressure-formed core
- Excellent reliability and feeding in duty firearms
- Excellent performance through FBI testing protocol



Part Number	Cartridge	Grain	Bullet Type	Velocity	Rounds/Case
54226	9mm Luger	147	Gold Dot G2	990	1000
53999	40 S&W	180	Gold Dot G2	1000	1000
54256	45 Auto +P	230	Gold Dot G2	950	1000



The TOUGHEST performer survives heavy barriers CONSISTENTLY

DUTY HANDGUN

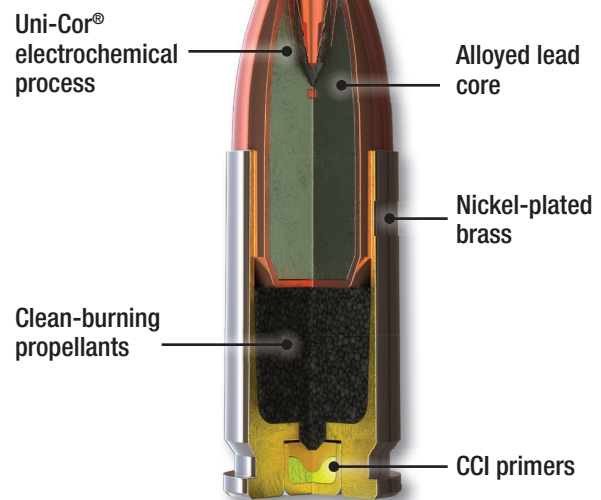
GOLD DOT DUTY

- Low-flash propellant
- Exclusive Gold Dot construction virtually eliminates core/jacket separation
- Patented Gold Dot cavity-forming process uses two stages—not one—to control terminal effects and achieve high retained weights
- Core and jacket are simultaneously notched for symmetrical expansion
- Large-volume cavity increases surface area, ensuring low-velocity expansion
- Excellent performance through FBI testing protocol

Part Number	Cartridge	Grain	Bullet Type	Velocity	Rounds/Case
23602GD	25 Auto	35	Gold Dot HP	900	200
23604GD	32 Auto	60	Gold Dot HP	960	200
53606	380 Auto	90	Gold Dot HP	990	1000
53614	9mm Luger	115	Gold Dot HP	1210	1000
53617	9mm Luger +P	124	Gold Dot HP	1220	1000
53618	9mm Luger	124	Gold Dot HP	1150	1000
53619	9mm Luger	147	Gold Dot HP	990	1000
53720	38 Special +P	125	Gold Dot HP	945	1000
53722	38 Special	125	Gold Dot HP	865	1000
53960	357 Magnum	158	Gold Dot HP	1235	1000
53918	357 SIG	125	Gold Dot HP	1350	1000
54234	357 SIG	125	Gold Dot HP	1375	1000
53970	40 S&W	165	Gold Dot HP	1150	1000
53962	40 S&W	180	Gold Dot HP	1025	1000
54000GD	10mm Auto	200	Gold Dot HP	1100	200
23980GD	44 Special	200	Gold Dot HP	875	200
53978	45 Glock A.P.	200	Gold Dot HP	970	1000
53966	45 Auto	230	Gold Dot HP	890	1000
53969	45 Auto +P	200	Gold Dot HP	1080	1000

**The ORIGINAL
standard with
PROVEN RELIABILITY**

SPEER LE



SPEER® LE

DUTY HANDGUN

GOLD DOT® SHORT BARREL

- Designed to expand consistently in barrels as short as 1.9 inches
- Exclusive Gold Dot construction virtually eliminates core/jacket separation
- Reliable expansion and performance at a variety of distances and velocities



Part Number	Cartridge	Grain	Bullet Type	Velocity	Rounds/Case
954	22 WMR	40	Gold Dot HP Short Barrel	1050	2000
23611GD	9mm Luger +P	124	Gold Dot HP Short Barrel	1150	200
53921	38 Special +P	135	Gold Dot HP Short Barrel	860	1000
23917GD	357 Magnum	135	Gold Dot HP Short Barrel	990	200
23974GD	40 S&W	180	Gold Dot HP Short Barrel	950	200
23975GD	45 Auto	230	Gold Dot HP Short Barrel	820	200

SPEER DUTY HANDGUN

CARTRIDGE	BULLET WT, GR	BULLET TYPE	LOAD NO.	TEST BARREL LENGTH, INCHES	VELOCITY (FPS)					ENERGY (FT-LBS)					TRAJECTORY (IN)			
					MUZZLE	25 YDS	50 YDS	75 YDS	100 YDS	MUZZLE	25 YDS	50 YDS	75 YDS	100 YDS	25 YDS	50 YDS	75 YDS	100 YDS
SPEER® LE GOLD DOT® G2® HANDGUN																		
9mm	147	GDG2	54226	4	990	959	932	906	883	320	300	283	268	255	⊕	-1.5	-5.4	-12.0
40 S&W	180	GDG2	53999	4	1000	968	940	914	890	400	374	353	334	317	⊕	-1.4	-5.3	-11.8
45 Auto +P	230	GDG2	54256	5	950	923	899	876	855	461	435	412	392	373	⊕	-1.7	-6.0	-13.1
SPEER® LE GOLD DOT® DUTY HANDGUN AMMUNITION																		
25 Auto	35	GDHP	23602	2	900	863	830	799	770	63	58	54	50	46	⊕	-2.0	-7.2	-15.7
32 Auto	60	GDHP	23604	4	960	925	894	866	840	123	114	107	100	94	⊕	-1.6	-6.0	-13.2
380 Auto	90	GDHP	53606	3.75	1040	987	943	905	871	216	194	178	164	152	⊕	-1.3	-5.1	-11.5
9mm Luger +P	124	GDHP	53617	4	1220	1146	1085	1036	996	410	362	324	296	273	⊕	-0.8	-3.3	-8.0
9mm Luger	115	GDHP	53614	4	1210	1133	1071	1022	981	374	328	293	267	246	⊕	-0.8	-3.5	-8.2
9mm Luger	124	GDHP	53618	4	1150	1089	1039	998	963	364	326	297	274	255	⊕	-0.9	-3.9	-9.0
9mm Luger	147	GDHP	53619	4	990	962	936	913	891	320	302	286	272	259	⊕	-1.5	-5.4	-11.9
38 Special	125	GDHP	53722	4 VB	865	843	822	803	784	208	197	188	179	170	⊕	-2.2	-7.5	-16.2
38 Special +P	125	GDHP	53720	4 VB	945	917	892	868	846	248	233	221	209	199	⊕	-1.7	-6.1	-13.4
38 Special +P	158	GDHP	53960	4 VB	1235	1173	1119	1074	1036	535	483	440	405	377	⊕	-0.7	-3.1	-7.4
357 SIG	125	GDHP	53918	4	1350	1261	1184	1119	1066	506	441	389	348	316	⊕	-0.5	-2.5	-6.2
357 SIG	125	GDHP	54234	4	1375	1283	1203	1135	1079	525	457	402	358	323	⊕	-0.4	-2.3	-5.9
40 S&W	165	GDHP	53970	4	1150	1090	1042	1001	967	484	436	398	367	342	⊕	-0.9	-3.9	-8.9
40 S&W	180	GDHP	53962	4	1025	988	956	928	902	420	390	365	344	325	⊕	-1.3	-5.0	-11.2
10mm Auto	200	GDHP	54000GD	5	1100	1028	972	927	887	537	469	420	381	350	⊕	-1.3	-4.7	-10.2
44 Special	200	GDHP	23980	6	875	853	832	813	794	340	323	308	293	280	⊕	-2.1	-7.3	-15.8
45 G.A.P.	200	GDHP	53978	5	970	939	911	886	862	418	392	369	348	330	⊕	-1.6	-5.7	-12.7
45 Auto	230	GDHP	53966	5	890	867	845	824	805	404	384	365	347	331	⊕	-2.0	-7.1	-15.3
45 Auto +P	200	GDHP	53969	5	1080	1033	994	960	930	518	474	439	409	384	⊕	-1.1	-4.5	-10.2
SPEER® LE GOLD DOT® SHORT BARREL® HANDGUN AMMUNITION																		
22 Win. Magnum	40	GDHP/SB	954	1.9	1050	1001	961	926	894	98	89	82	76	71	⊕	-1.3	-4.9	-11.0
9mm Luger +P	124	GDHP/SB	23611	3.5	1150	1089	1039	998	963	364	326	297	274	255	⊕	-0.9	-3.9	-9.0
38 Special +P	135	GDHP/SB	53921	2 VB	860	838	818	798	780	222	211	200	191	182	⊕	-2.2	-7.6	-16.4
357 Magnum	135	GDHP/SB	23917	2 VB	990	957	928	902	877	294	275	258	244	231	⊕	-1.5	-5.5	-12.1
40 S&W	180	GDHP/SB	23974	3.5	950	923	898	875	854	361	340	322	306	291	⊕	-1.7	-6.0	-13.2
45 Auto	230	GDHP/SB	23975	4	820	801	783	766	749	343	328	313	300	287	⊕	-2.5	-8.5	-18.3

DUTY RIFLE

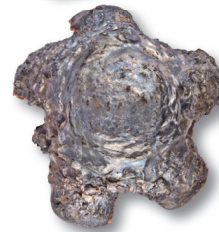
SPEER LE

GOLD DOT

- Exclusive Gold Dot construction virtually eliminates core/jacket separation
- Flash-suppressed propellants and a muzzle velocity of up to 3220 fps
- Jacket-to-core bonding ensures impressive weight retention through barriers as tough as auto glass
- Reliable feeding in AR platforms with standard or short barrels



Part Number	Cartridge	Grain	Bullet Type	Velocity	Rounds/Case
24446	223 Rem.	55	Gold Dot SP	3220	500
24445SP	223 Rem.	62	Gold Dot SP	3000	500
24475	223 Rem.	75	Gold Dot SP	2775	500
224VLKGD1	224 Valkyrie	90	Gold Dot SP	2700	500
24457	308 Win.	150	Gold Dot SP	2820	500
24458	308 Win.	168	Gold Dot SP	2650	500
300BLKGDR1	300 Blackout	150	Gold Dot SP	1900	500



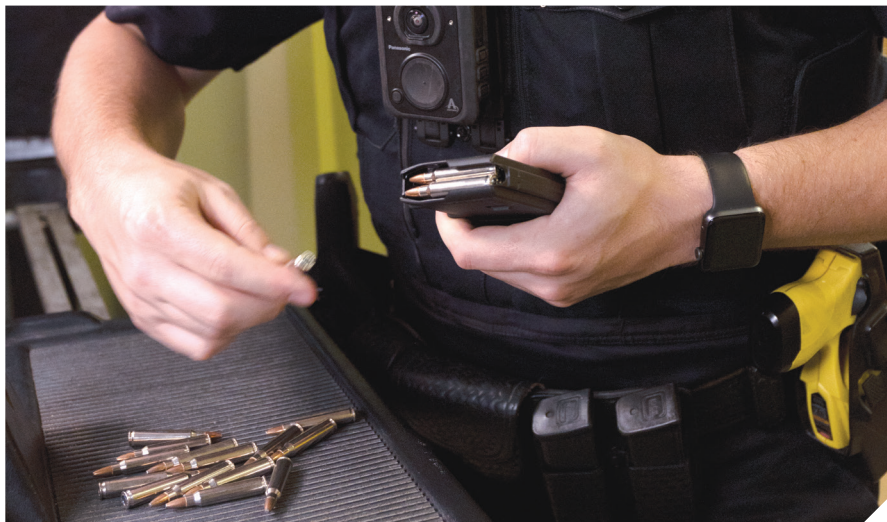
Bullet geometry optimized for short barrels

Gold Dot technology virtually eliminates core/jacket separation

Low-flash, clean-burning propellant

Nickel-plated brass

Non-corrosive, non-mercuric primers



SPEER DUTY RIFLE

CARTRIDGE	BULLET WT, GR	BULLET TYPE	LOAD NO.	TEST BARREL LENGTH, INCHES	MUZZLE	VELOCITY (FPS)			MUZZLE	ENERGY (FT-LBS)			TRAJECTORY			
						100 YDS	200 YDS	300 YDS		100 YDS	200 YDS	300 YDS	50 YDS	100 YDS	200 YDS	300 YDS
SPEER® LE GOLD DOT® DUTY RIFLE AMMUNITION																
223 Rem.	55	GDSP	24446	24	3220	2782	2383	2019	1266	945	694	498	-0.3	⊕	-3.0	-12.2
223 Rem.	62	GDSP	24445SP	24	3000	2654	2333	2035	1279	1001	773	588	-0.2	⊕	-3.4	-13.3
223 Rem.	75	GDSP	24475	24	2775	2550	2336	2132	1282	1083	908	757	-0.1	⊕	-3.8	-14.1
224 Valkyrie	90	GDSP	224VLKGD1	24	2700	2491	2291	2101	1457	1240	1049	882	-0.1	⊕	-4.1	-14.9
308 Win.	150	GDSP	24457	24	2820	2600	2391	2191	2648	2252	1903	1599	-0.2	⊕	-3.6	-13.4
308 Win.	168	GDSP	24458	24	2650	2453	2265	2085	2619	2244	1913	1621	-0.1	⊕	-4.3	-15.4
300 Blackout	150	GDSP	300BLKGDR1	16	1900	1685	1490	1320	1202	946	739	580	0.6	⊕	-10.8	-37.3

*—Bullet path in inches relative to line of sight when sighted for 25 yards (sight height 0.9 inch above centerline of bore). Test barrels used to determine ballistics information. Individual firearms may vary. These values are approximate and provided for reference only. All products are 50 rounds per box except 25 Auto, 32 Auto, and 44 Special, which are 20 rounds per box. GDHP—Gold Dot Hollow Point, GDG2—Gold Dot G2, SB—Short Barrel, GDSP—Gold Dot Soft Point, VB—Vented test barrel simulating revolver performance. Pressures are as much as 22 greater than industry standards. Purchasers must be able to affirm that +P+ ammunition is for law enforcement/government use only. SB—Short Barrel; bullet design optimized for compact firearms; 357 and 44 Magnum feature reduced recoil compared to standard loads.

These trajectory tables were calculated by computer using the best available data for each load. Trajectories are representative of the normal behavior of each load at standard conditions 59°F temperature; barometric pressure of 29.53 inches; altitude at sea level. Shooters are cautioned that actual trajectories may differ due to variations in altitude, atmospheric conditions, guns, sights, and ammunition. Midrange Trajectory is the maximum bullet rise between muzzle bore and given range when zeroed at given range. Height of bullet trajectory above or below line of sight if zeroed at 100 yards. Sights 1.5 inches above bore line.

SPEER® LE

LAWMAN® TMJ®

- Delivers the ballistic equivalent of Gold Dot® Duty loads at a fraction of the cost for training
- High-value brass cases, CCI® primers and Speer TMJ bullets
- Tight groups and consistent pressure and velocity

Part Number	Cartridge	Grain	Bullet Type	Velocity	Rounds/Case
53608	380 Auto	95	TMJ RN	950	1000
53650	9mm Luger	115	TMJ RN	1200	1000
53651	9mm Luger	124	TMJ RN	1090	1000
53620	9mm Luger	147	TMJ FN	985	1000
53733	38 Special	125	TMJ FN	865	1000
53750	38 Special +P	158	TMJ FN	900	1000
53919	357 SIG	125	TMJ FN	1325	1000
53955	40 S&W	165	TMJ FN	1150	1000
53652	40 S&W	180	TMJ FN	1000	1000
53979	45 Glock A.P.	185	TMJ FN	1060	1000
53980	45 Glock A.P.	200	TMJ FN	990	1000
53653	45 Auto	230	TMJ RN	830	1000

TRAINING HANDGUN



LAWMAN CLEAN-FIRE® TMJ

- Clean-Fire primers virtually eliminate airborne lead, barium and antimony at the firing point
- Electro-chemically applied jacket completely surrounds the core
- Delivers the same accuracy as standard ammunition

Part Number	Cartridge	Grain	Bullet Type	Velocity	Rounds/Case
53824	9mm Luger	124	TMJ Round Nose	1090	1000
53826	9mm Luger	147	TMJ Flat Nose	985	1000
53833	38 Special +P	158	TMJ Flat Nose	900	1000
54232	357 SIG	125	TMJ Flat Nose	1350	1000
53880	40 S&W	180	TMJ Flat Nose	1000	1000
53982	40 S&W	165	TMJ Flat Nose	1050	1000
53885	45 Auto	230	TMJ Round Nose	845	1000



TRAINING HANDGUN

SPEER LE

LAWMAN RHT®

- Improves air quality in indoor ranges
- Reduces bullet bounce-back
- RHT (Reduced Hazard Training) lead-free sintered bullets crumble on impact with a metal backstop
- Loaded with CCI® Clean-Fire primers free of lead, barium and antimony
- Bullet nose is distinctly marked so it can be distinguished from conventional ammunition



Part Number	Cartridge	Grain	Bullet Type	Velocity	Rounds/Case
53365	9mm Luger	100	SinterFire® RHT	1270	1000
53367	9mm Luger	100	RHT	1270	1000
53368	357 SIG	100	SinterFire RHT	1450	1000
53375	40 S&W	125	SinterFire RHT	1300	1000
53395	45 Auto	155	SinterFire RHT	1125	1000

SPEER TRAINING HANDGUN

CARTRIDGE	BULLET WT, GR	BULLET TYPE	LOAD NO.	TEST BARREL LENGTH, INCHES	MUZZLE	VELOCITY (FPS)				MUZZLE	ENERGY (FT-LBS)				TRAJECTORY			
						25 YDS	50 YDS	75 YDS	100 YDS		25 YDS	50 YDS	75 YDS	100 YDS	25 YDS	50 YDS	75 YDS	100 YDS
SPEER® LAWMAN® TMJ® HANDGUN AMMUNITION																		
380 Auto	95	TMJ RN	53608	3.75	950	920	892	867	843	190	178	168	158	150	⊕	-1.7	-6.0	-13.4
9mm Luger	115	TMJ RN	53650	4	1200	1145	1098	1059	1024	368	335	308	286	268	⊕	-0.8	-3.3	-7.8
9mm Luger	124	TMJ RN	53651	4	1090	1047	1011	979	951	327	302	281	264	249	⊕	-1.1	-4.3	-9.7
9mm Luger	147	TMJ FN	53620	4	985	957	932	909	888	317	299	284	270	257	⊕	-1.5	-5.5	-12.0
38 Special	125	TMJ FN	53733	4 VB	865	844	824	804	786	208	198	188	180	172	⊕	-2.2	-7.5	-16.2
38 Special +P	158	TMJ FN	53750	4 VB	900	880	861	844	826	284	272	260	250	240	⊕	-1.9	-9.8	-14.7
357 SIG	125	TMJ FN	53919	4	1325	1242	1171	1111	1061	487	428	380	342	313	⊕	-0.5	-2.6	-6.5
40 S&W	165	TMJ FN	53955	4	1150	1089	1040	999	964	484	435	396	365	340	⊕	-0.9	-3.9	-9.0
40 S&W	180	TMJ FN	53652	4	1000	967	937	910	885	400	373	351	331	313	⊕	-1.4	-5.3	-11.8
45 G.A.P.	185	TMJ FN	53979	4	1060	999	950	908	872	462	410	370	339	312	⊕	-1.3	-5.0	-11.2
45 G.A.P.	200	TMJ FN	53980	4	990	946	908	874	843	435	397	366	339	316	⊕	-1.5	-5.7	-12.7
45 Auto	230	TMJ RN	53653	5	830	811	794	777	760	352	336	322	308	295	⊕	-2.4	-8.2	-17.7
SPEER® LAWMAN® CLEAN-FIRE® TMJ® HANDGUN AMMUNITION																		
9mm Luger	124	TMJ RN	53824	4	1090	1052	1019	991	965	327	305	286	270	256	⊕	-1.1	-4.2	-9.6
9mm Luger	147	TMJ FN	53826	4	985	957	932	909	888	317	299	284	270	257	⊕	-1.5	-5.5	-12
38 Special +P	158	TMJ FN	53833	4 VB	900	880	861	844	826	284	272	260	250	240	⊕	-1.9	-6.8	-14.7
357 SIG	125	TMJ FN	54232	4	1350	1264	1190	1126	1074	506	444	393	352	320	⊕	-0.5	-2.5	-6.2
40 S&W	180	TMJ FN	53880	4	1000	967	937	910	885	400	373	351	331	313	⊕	-1.4	-5.3	-11.8
40 S&W	165	TMJ FN	53982	4	1050	1007	971	939	911	404	372	345	323	304	⊕	-1.2	-4.8	-10.8
45 Auto	230	TMJ RN	53885	5	845	826	807	790	773	365	348	333	318	305	⊕	-2.3	-7.9	-16.9
SPEER® LAWMAN® RHT® HANDGUN AMMUNITION																		
9mm Luger	100	RHT	53365	4	1270	1180	1106	1048	1002	358	309	272	244	223	⊕	-0.7	-3.1	-7.5
9mm Luger	100	RHT	53367	4	1270	1175	1098	1039	991	358	306	268	240	218	⊕	-0.7	-3.1	-7.6
357 SIG	100	RHT	53368	4	1450	1336	1235	1151	1084	467	396	339	294	261	⊕	-0.3	-2.1	-5.4
40 S&W	125	RHT	53375	4	1300	1176	1082	1013	959	469	384	325	285	255	⊕	-0.7	-3.2	-7.8
45 Auto	155	RHT	53395	5	1125	1058	1005	961	924	436	385	348	318	294	⊕	-1.0	-4.2	-9.8

*—Path in inches relative to line of sight (handgun sight height 0.9 inch above centerline of bore; rifle sight height 1.5 inches). Test barrels used to determine ballistics information. Individual firearms may vary. These values are approximate and provided for reference only. All products are 50 rounds per box except 223 Rem, which is 20 rounds per box. †—Performs well in snub nose revolvers. TMJ—Encased Core Full Jacket, FN—Flat Nose, RN—Round Nose, RHT—Reduced Hazard Training, VB—Vented test barrel simulating revolver performance. Purchasers must be able to affirm that +P+ ammunition is for law enforcement/government use only.

These trajectory tables were calculated by computer using the best available data for each load. Trajectories are representative of the normal behavior of each load at standard conditions 59°F temperature; barometric pressure of 29.53 inches; altitude at sea level. Shooters are cautioned that actual trajectories may differ due to variations in altitude, atmospheric conditions, guns, sights, and ammunition. Midrange Trajectory is the maximum bullet rise between muzzle bore and given range when zeroed at given range. Height of bullet trajectory above or below line of sight if zeroed at 100 yards. Sights 1.5 inches above bore line.

BLAZER®

TRAINING HANDGUN

BLAZER BRASS

- New 9mm Luger 147-grain option better aligns with popular duty loads
- Reloadable brass cases
- Accurate FMJ bullet
- Clean, reliable CCI® primer

Part Number	Cartridge	Grain	Bullet Type	Velocity	Rounds/Case
5202	380 Auto	95	FMJ RN	945	1000
5200	9mm Luger	115	FMJ RN	1145	1000
5201	9mm Luger	124	FMJ RN	1090	1000
5203	9mm Luger	147	FMJ	950	1000
5204	38 Special	125	FMJ FN	865	1000
5207	357 Magnum	158	JHP	1250	1000
5210	40 S&W	165	FMJ FN	1050	1000
5220	40 S&W	180	FMJ FN	985	1000
5230	45 Auto	230	FMJ RN	830	1000
5221	10mm	180	FMJ	1200	1000



BLAZER ALUMINUM

- Heat-treated, aircraft-grade aluminum cases
- Loaded with quality bullets and reliable primers
- Affordably priced for practice shooting
- Delivers the same accuracy as standard ammunition

Part Number	Cartridge	Grain	Bullet Type	Velocity	Rounds/Case
3501	25 Auto	50	TMJ RN	755	1000
3503	32 Auto	71	TMJ RN	900	1000
3505	380 Auto	95	TMJ RN	945	1000
3509	9mm Luger	115	FMJ RN	1145	1000
3522	38 Special	158	LRN	755	1000
3514	38 Special +P	125	JHP	945	1000
3519	38 Special +P	158	TMJ FN	850	1000
3542	357 Magnum	158	JHP	1150	1000
3589	40 S&W	165	TMJ FN	1100	1000
3597	10mm Auto	200	TMJ FN	1050	1000
3556	44 Special	200	JHP	920	1000
3570	45 Auto	230	FMJ	845	1000
3584	45 Colt	200	JHP	1000	1000



TRAINING HANDGUN

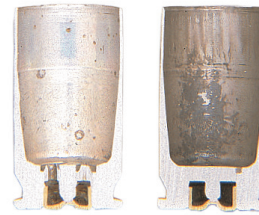
BLAZER

BLAZER CLEAN-FIRE®

- Designed for indoor ranges
- Clean-Fire primers virtually eliminate airborne lead, barium and antimony at the firing point
- Loaded with Speer® TMJ® bullets
- Realistic recoil and point-of-impact



Part Number	Cartridge	Grain	Bullet Type	Velocity	Rounds/Case
3460	9mm Luger	124	TMJ RN	1090	1000
3462	9mm Luger	147	TMJ FN	950	1000
3475	38 Special +P	158	TMJ FN	850	1000
3477	40 S&W	180	TMJ FN	1000	1000
3480	45 Auto	230	TMJ RN	845	1000



Spent Clean-Fire cases (left) look almost unfired compared to conventionally primed ammunition (right).

BLAZER TRAINING HANDGUN

CARTRIDGE	BULLET WT, GR	BULLET TYPE	LOAD NO.	TEST BARREL LENGTH, INCHES	MUZZLE	VELOCITY (FPS)				MUZZLE	ENERGY (FT-LBS)			TRAJECTORY				
						25 YDS	50 YDS	75 YDS	100 YDS		25 YDS	50 YDS	75 YDS	100 YDS	25 YDS	50 YDS	75 YDS	100 YDS
BLAZER® BRASS HANDGUN AMMUNITION																		
9mm Luger	115	FMJ RN	5200	4	1145	⊕	1046	⊕	975	323	⊕	278	⊕	247	⊕	⊕	-3.8	-8.9
9mm Luger	124	FMJ RN	5201	4	1090	⊕	1014	⊕	955	327	⊕	283	⊕	251	⊕	⊕	-4.3	-9.7
380 Auto	95	FMJ RN	5202	3.75	945	⊕	888	⊕	839	188	⊕	166	⊕	149	⊕	⊕	-6.1	-13.5
38 Special	125	FMJ FN	5204	4 VB	865	⊕	824	⊕	786	208	⊕	188	⊕	172	⊕	⊕	-7.5	-16.2
357 Magnum	158	JHP	5207	4 VB	1250	⊕	1130	⊕	1044	548	⊕	448	⊕	382	⊕	⊕	-2.6	-6.6
40 S&W	165	FMJ FN	5210	4	1050	⊕	971	⊕	911	404	⊕	345	⊕	304	⊕	⊕	-4.3	-9.8
40 S&W	180	TMJ FN	5220	4	985	⊕	935	⊕	875	388	⊕	350	⊕	306	⊕	⊕	-5.2	-11.8
45 Auto	230	FMJ RN	5230	5	830	⊕	794	⊕	760	352	⊕	322	⊕	295	⊕	⊕	-8.2	-17.5
10mm	180	FMJ	5221	5	1200	⊕	1078	⊕	994	575	⊕	464	⊕	395	⊕	⊕	-1.4	-4.7
BLAZER® ALUMINUM HANDGUN AMMUNITION																		
25 Auto	50	TMJ RN	3501	2	755	⊕	712	⊕	673	63	⊕	56	⊕	50	⊕	⊕	-5.8	-16.1
32 Auto	71	TMJ RN	3503	4	900	⊕	838	⊕	785	128	⊕	111	⊕	97	⊕	⊕	-4.1	-11.4
380 Auto	95	TMJ RN	3505	3.75	945	⊕	888	⊕	839	188	⊕	166	⊕	149	⊕	⊕	-3.6	-10.1
9mm Luger	115	FMJ RN	3509	4	1145	⊕	1058	⊕	994	335	⊕	286	⊕	252	⊕	⊕	-2.4	-6.8
38 Special	158	LRN	3522	4 VB	755	⊕	728	⊕	702	200	⊕	186	⊕	173	⊕	⊕	-5.6	-15.5
38 Special +P	125	JHP	3514	4 VB	945	⊕	892	⊕	846	248	⊕	221	⊕	199	⊕	⊕	-3.6	-10.0
38 Special +P	158	TMJ FN	3519	4 VB	850	⊕	816	⊕	785	253	⊕	234	⊕	216	⊕	⊕	-4.3	-12.1
357 Magnum	158	JHP	3542	4 VB	1150	⊕	1058	⊕	991	464	⊕	393	⊕	344	⊕	⊕	-2.4	-6.8
40 S&W	165	TMJ FN	3589	4	1100	⊕	1006	⊕	938	443	⊕	371	⊕	323	⊕	⊕	-2.7	-7.7
10mm Auto	200	TMJ FN	3597	5	1050	⊕	985	⊕	933	490	⊕	431	⊕	387	⊕	⊕	-2.8	-8.1
44 Special	200	JHP	3556	5	920	⊕	872	⊕	829	376	⊕	337	⊕	305	⊕	⊕	-3.8	-10.6
45 Auto	230	FMJ	3570	5	845	⊕	807	⊕	773	365	⊕	333	⊕	305	⊕	⊕	-4.4	-12.4
45 Colt	200	JHP	3584	7.15	1000	⊕	935	⊕	882	444	⊕	388	⊕	345	⊕	⊕	-3.2	-9.0
BLAZER® CLEAN-FIRE® HANDGUN AMMUNITION																		
9mm Luger	124	TMJ RN	3460	4	1090	⊕	1019	⊕	965	327	⊕	286	⊕	216	⊕	⊕	-4.3	-12.1
9mm Luger	147	TMJ FN	3462	4	985	⊕	938	⊕	898	317	⊕	287	⊕	263	⊕	⊕	-3.2	-9.0
38 Special +P	158	TMJ FN	3475	4 V	850	⊕	816	⊕	785	253	⊕	234	⊕	216	⊕	⊕	-4.3	-12.1
40 S&W	180	TMJ FN	3477	4	1000	⊕	937	⊕	885	400	⊕	351	⊕	313	⊕	⊕	-3.2	-9.0
45 Auto	230	TMJ RN	3480	5	845	⊕	807	⊕	773	365	⊕	333	⊕	305	⊕	⊕	-4.4	-12.4

*—Path in inches relative to line of sight when sighted for 25 yards (sight height 0.9 inch above centerline of bore). Test barrels used to determine ballistics information. Individual firearms may vary. These values are approximate and provided for reference only. All products are 50 rounds per box. TMJ—Encased Core Full Jacket, FN—Flat Nose, RN—Round Nose, JHP—Jacketed Hollow Point, LRN—Lead Round Nose, VB—Vented test barrel simulating revolver performance. LFFN—Lead-free Flat Nose. Purchasers must be able to affirm that +P+ ammunition is for law enforcement/government use only. These trajectory tables were calculated by computer using the best available data for each load. Trajectories are representative of the normal behavior of each load at standard conditions 59°F temperature; barometric pressure of 29.53 inches; altitude at sea level. Shooters are cautioned that actual trajectories may differ due to variations in altitude, atmospheric conditions, guns, sights, and ammunition. Midrange Trajectory is the maximum bullet rise between muzzle bore and given range when zeroed at given range. Height of bullet trajectory above or below line of sight if zeroed at 100 yards. Sights 1.5 inches above bore line.

SPEER^{LE}

PROVEN

**EVERY DAY, 3,000-PLUS
AGENCIES CHOOSE
SPEER GOLD DOT**

When lives are on the line, the right choice is your only choice. That's why the FBI and top law enforcement agencies choose Speer® Gold Dot® handgun ammunition. Select nothing less to protect your officers and community.

SPEER® GOLD DOT®

The No. 1 choice of law enforcement

